

# TriWich® Modular Mobility Solutions

HitchWich" Official Military Shipping Container Dolly" Off-Road-Pneumatic (87,120 lbs) On-Road- Towing (397,000-lbs)  
Tri-UP Straight Up 30"-70" / 90-130": Load/Unload Chassis, Flatbeds, & LiftWich / Tri-Jack 23" in 90 seconds 40k/64k  
LiftWich "The Highway Dolly" - Use your Pickup truck to Jack & Tow Shipping Container and go down the Highway  
Angled Wheel Dolly: 99,000 lbs AeroWich, 18,000 lbs 32" Semi-Trucks, 6,000 lbs 24" Electric-Vehicle, 2,400 lbs 18" Supercars  
TriWich - Smallest Strongest Most Diverse Dolly Worldwide for EVERY caster in the world! 3"-25" up to 40 lbs./caster



## TriWich: Which Wich is Which? Products and Terminology



# TriWich® Modular Mobility Solutions

HitchWich™ "The Official Military Shipping Container Dolly" Off-Road-Pneumatic (87,120 lbs) On-Road Nylatron (396,000-lbs)



## SpindleWich

"Rear Axle" up to 14,000 lb Shipping Containers



## SwivelWich

Off-Road Pneumatics

"Swivel Axle" Front or Back Up to 240,000 lbs/axles (480,000 lb containers)

On-Road Nylatron

T3 Pneumatic (US Navy HitchWich)

T5 Nylatron (AT&T CaddyWich)



[www.TriWich.com](http://www.TriWich.com)

[Engineering@TriWich.com](mailto:Engineering@TriWich.com)

909-582-9591

# TriWich® Modular Mobility Solutions

HitchWich "The Official Military Shipping Container Dolly" Off-Road-Pneumatic (87,120 lbs) On-Road Nylatron (396,000-lbs)



## Tri-Couplers HitchWich

"HitchWich" is our Tri-Coupler with a Ball Hitch Coupler and optional Flexible V-Bar

HitchWich enable anyone to move containers with a tractor, forklift, truck (ball hitch), truck (V-Bar) or Trailer Caddy (Robot)

HitchWich comes with a number of adapter options: Forklift Adapters 6x2, 8x3, 10x4, Skid Steer 11k, V-Bar "the US Army/Navy Wagon" / Tractors require a 3 point hitch specific to your tractor.



## CaddyWich

Trailer Caddies and Aircraft Caddies require Front Loaded and need a "Rigid Connector"

CaddyWich is used to pivot fully loaded shipping containers in production and tight areas not accessible by larger equipment



[www.TriWich.com](http://www.TriWich.com)

[Engineering@TriWich.com](mailto:Engineering@TriWich.com)

909-582-9591

# TriWich® Modular Mobility Solutions

HitchWich "The Official Military Shipping Container Dolly" Off-Road-Pneumatic (87,120 lbs) On-Road Nylatron (396,000-lbs)



## HitchWich

### The Official Military Shipping Container Dolly

### US Army, Navy, Air Force, Marines, Coast Guard & Space Force

Enables you to move an Empty to Fully Loaded Shipping Container with a Tractor, Forklift, Truck or Aircraft Caddy on Pneumatics or Heavy-Duty Casters

TriWich SKU	TriWich SKU Description	2024.03.18.08	Quantity	Pricing	Ext Price	Ext Wt (lbs)	DBG
<b>Off-Road Pneumatic Solutions "The US Army/Navy Wagon" - Most Demanding Application</b>							
<b>Pneumatic 0 "P0" TurnKey Options Up to 14,000 lb Containers / Rear Axle SpindleWich / SwivelWich Front or Back Axle / Tri-Coupler Lunette Ring</b>							
<b>Pneumatic "P0": Means the Container load is carried by a Forklift or Tractor (Tractors require a 3-Pt Hitch)(Forklift require a Forklift Adapter)</b>							
HitchWich.T10.P006	HitchWich 6,000 lb. (No Casters)(Rear Axle SpindleWich 5,660 lb)(One T22 6k SwivelWich Axle)(Tri-Coupler Ball-Hitch)						
<b>HitchWich.T30.P011</b>	<b>HitchWich 11,000 lb. (No Casters) (Rear Axle SpindleWich 5,660 lb)(One T36 12k SwivelWich Axle)(Tri-Coupler Lunette Ring)</b>						<b>Tractor/Forklift</b>
HitchWich.T30.P014	HitchWich 14,000 lb. (No Casters)(Rear Axle SpindleWich 7,000 lb)(One T37 14k SwivelWich Axle)(Tri-Coupler Lunette Ring)						
<b>Pneumatic 2 "P2" TurnKey Options Up to 14,000 lb Containers / Rear Axle SpindleWich / SwivelWich Front Axle / Tri-Coupler Lunette Ring</b>							
<b>Pneumatic "P2": Means the load is supported by casters and enables you to use a Pickup to pull a container. (Limited by the payload rating of your vehicle)</b>							
HitchWich.T37.P206	HitchWich 6,000 lb. Two Pneumatic Casters 2x16"(Rear Axle SpindleWich 5,660 lb)(One T37 12k SwivelWich Axle)(Tri-Coupler Lunette Ring)						
<b>HitchWich.T52.P209</b>	<b>HitchWich 9,360 lb. Two Pneumatic Casters 2x18" (Rear Axle SpindleWich 5,660 lb)(One SwivelWich T3Y 40k Axle)(Tri-Coupler Lunette Ring)</b>						<b>Pickup Truck</b>
HitchWich.T54.P214	HitchWich 14,000 lb. Two Pneumatic Casters 2x21"(Rear Axle SpindleWich 7,000 lb)(One T54 40k SwivelWich Axle)(Tri-Coupler Lunette Ring)						
<b>Pneumatic 4 "P4" TurnKey Options Up to 21,780 lb Containers/ SwivelWich 80,000 lb Axles / Tri-Coupler Lunette Ring</b>							
<b>Pneumatic "P4": are necessary when the containers are over 14,000 lbs which is the limit of SpindleWich (Max 4 Pneumatics 21,780 lbs)(Max 4 Nylatron 99,000 lbs)</b>							
HitchWich.T37.P403	HitchWich 3,000 lb. Four Pneumatic Casters 2x12" (Two T37 14k SwivelWich Axles)(Tri-Coupler Lunette Ring)						
HitchWich.T37.P405	HitchWich 5,220 lb. Four Pneumatic Casters 2x14" (Two T37 14k SwivelWich Axles)(Tri-Coupler Lunette Ring)						
HitchWich.T37.P406	HitchWich 6,000 lb. Four Pneumatic Casters 2x16" (Two T37 14k SwivelWich Axles)(Tri-Coupler Lunette Ring)						
HitchWich.T52.P407	HitchWich 7,380 lb. Four Pneumatic Casters 2x16" (Two T52 40k SwivelWich Axles)(Tri-Coupler Lunette Ring)						
HitchWich.T52.P409	HitchWich 9,360 lb. Four Pneumatic Casters 2x18"(Two T52 40k SwivelWich Axles)(Tri-Coupler Lunette Ring)						
HitchWich.T54.P414	HitchWich 14,520 lb. Four Pneumatic Casters 2x21"(Two T54 80k SwivelWich Axles)(Tri-Coupler Lunette Ring)						
HitchWich.T54.P416	HitchWich 16,650 lb. Four Pneumatic Casters 2x23"(Two T54 80k SwivelWich Axles)(Tri-Coupler Lunette Ring)						
HitchWich.T54.P421	HitchWich 21,780 lb. Four Pneumatic Casters 2x25" (Two T54 80k SwivelWich Axles)(Tri-Coupler Lunette Ring)						
<b>Pneumatic 8 "P8" TurnKey Options Up to 43,560 / SwivelWich 160,000 lb Axles "The Tri-Plug Wall" / Tri-Coupler Lunette Ring</b>							
<b>Pneumatic "P8": are necessary if you require Pneumatics above 21,780 lbs (Max 8 Pneumatics 43,560 lbs.)(Max 8 Nylatrons 198,000 lbs.)</b>							
HitchWich.T54.P829	HitchWich 29,040 lb. Eight Pneumatic Casters 2x21"(Two T5X 160k SwivelWich Axles)(Tri-Coupler Lunette Ring)						
HitchWich.T54.P833	HitchWich 33,300 lb. Eight Pneumatic Casters 2x23" (Two T5X 160k SwivelWich Axles)(Tri-Coupler Lunette Ring)						
HitchWich.T54.P843	HitchWich 43,560 lb. Eight Pneumatic Casters 2x25" (Two T5X 160k SwivelWich Axles)(Tri-Coupler Lunette Ring)						
<b>Pneumatic 12 "PX" TurnKey Options Up to 65,340 lb / SwivelWich 240,000 lb Axles "The Tri-Plug Wall" &amp; "Double Casting Corner" / Tri-Coupler Lunette Ring</b>							
<b>Pneumatic "PX": IS necessary if you require Pneumatics above 43,560 lbs (Max 12 Pneumatics 65,340 lbs.)(Max 12 Nylatron 297,000 lbs.)</b>							
HitchWich.T54.PX49	HitchWich 49,950 lb. Twelve Pneumatic Casters 2x23" (Two T5X 240k SwivelWich Axles)(Tri-Coupler Lunette Ring)						
HitchWich.T54.PX65	HitchWich 65,340 lb. Twelve Pneumatic Casters 2x25" (Two T5X 240k SwivelWich Axles)(Tri-Coupler Lunette Ring)						
<b>On-Road Nylatron Turnkey Solutions "The AT&amp;T Production Dolly"</b>							
<b>Nylatron 4 "On-Road" Casters with Swivel Locks Options Up to 297,000 lbs Containers / SwivelWich Front &amp; Back Axles / Tri-Coupler Lunette Ring</b>							
<b>Nylatron Four Swivel Turnkey Solutions "N4": Enable 99,000 lbs/containers dollies</b>							
HitchWich.T22.N406	HitchWich 6,000 lb. Four Nylatron Casters 1x4" (Two T22 4k SwivelWich Axles)(Tri-Coupler Ball-Hitch)						
HitchWich.T36.N418	HitchWich 18,000 lb. Four Nylatron Casters 1x6" (Two T36 12k SwivelWich Axles)(Tri-Coupler Lunette Ring)						
HitchWich.T37.N421	HitchWich 21,000 lb. Four Nylatron Casters 1x6" (Two T37 14k SwivelWich Axles)(Tri-Coupler Lunette Ring)						
HitchWich.T51.N430	HitchWich 30,000 lb. Four Nylatron Casters 1x6" (Two T3X 20k SwivelWich Axles)(Tri-Coupler Lunette Ring)						
HitchWich.T52.N460	HitchWich 60,000 lb. Four Nylatron Casters 2x6" (Two T52 40k SwivelWich Axles)(Tri-Coupler Lunette Ring)						

HitchWich.T54.N499 HitchWich 99,000 lb. Four Nylatron Casters 2x10" (Two T54 80k SwivelWich Axles)(Tri-Coupler Lunette Ring)

**Nylatron Eight Swivel Turnkey Solutions "N8": Casters enable 198,000 lbs/containers dollies (if needed)**

HitchWich.T52.N812 HitchWich 120,000 lb. Eight Nylatron Casters 2x6" (Two T52.x2 160k SwivelWich Axles)(Tri-Coupler Lunette Ring)

HitchWich.T54.N816 HitchWich 168,000 lb. Eight Nylatron Casters 2x8" (Two T54x2 160k SwivelWich Axles)(Tri-Coupler Lunette Ring)

HitchWich.T54.N819 HitchWich 198,000 lb. Eight Nylatron Casters 2x10" (Two T54x2 160k SwivelWich Axles)(Tri-Coupler Lunette Ring)

**Nylatron Twelve Swivel Turnkey Solutions "NX": Casters enable 297,000 lbs/containers dollies (if needed)**

HitchWich.T54.NX25 HitchWich 252,000 lb. Twelve Nylatron Casters 2x8" (Two T54x3 240k SwivelWich Axles)(Tri-Coupler Lunette Ring)

HitchWich.T54.NX29 HitchWich 297,000 lb. Twelve Nylatron Casters 2x10" (Two T54x3 240k SwivelWich Axles)(Tri-Coupler Lunette Ring)

**Shock Absorbing Turnkey Solutions**

**8 Shock Absorbing Casters with Swivel Locks Options Up to 104,000 lbs Containers / SwivelWich Front & Back Axles / Tri-Coupler Lunette Ring**

**Heavy-Duty Shock Absorbing Turnkey Solutions: Up to 104,000 lbs/containers dollies**

HitchWich.T3.D8S1 HitchWich 16,800 lb. Eight Shock Absorbing Durastan 2x8" (Two T3X 60k SwivelWich Axles)(Tri-Coupler Lunette Ring)

HitchWich.T3.D8S2 HitchWich 24,000 lb. Eight Shock Absorbing Durastan 2x10" (Two T3X 60k SwivelWich Axles)(Tri-Coupler Lunette Ring)

HitchWich.T5.D8S5 HitchWich 52,000 lb. Eight Shock Absorbing Durastan 2x12" (Two T5X 160k SwivelWich Axles)(Tri-Coupler Lunette Ring)

HitchWich.T5.U8S7 HitchWich 76,800 lb. Eight Shock Absorbing Urethan on Iron 2x12" (Two T5X 160k SwivelWich Axles)(Tri-Coupler Lunette Ring)

HitchWich.T5.U8SX HitchWich 104,000 lb. Eight Shock Absorbing Urethan on Iron 2x16" (Two T5X 160k SwivelWich Axles)(Tri-Coupler Lunette Ring)

**Specialty Caster Pneumatic Shock Absorbing Turnkey Solutions: Up to 60,000 lbs/containers dollies**

HitchWich.T5.P8S4 HitchWich 40,000 lb. Eight Shock Absorbing Pneumatic 2x25" (Two T5X 160k SwivelWich Axles)(Tri-Coupler Lunette Ring)

HitchWich.T5.PXS6 HitchWich 60,000 lb. Twelve Shock Absorbing Pneumatic 2x25" (Two T5X 240k SwivelWich Axles)(Tri-Coupler Lunette Ring)

**Build Your Own Dolly**

**Assemblies**

SpindleWich

*Rear Axle Straight Only Solution up to 14,000 lb Shipping containers*

SwivelWich

*Front or Rear Swivel Axles Up to 320,000 lb Containers*

Part Level

Tri-Couplers

*Lunette Ring or Ball Hitch*

Forklift Adapters

*Fork Lift Adapters*

V-Bar "The US Army/Navy Wagon"

*"The US Army/Navy Wagon (aka V-Wich)*

R-Bar "The AT&T Production CaddyWich"

*Move UP to 75,000 lbs containers*

TriWich

*Smallest Strongest Dolly in the World*

Tri-Lug

*Shipping Container Stadium Hole Connector 40,000 lbs*

Tri-Plug

*Shipping Container Shield Hole Connector 40,000 lbs*

Tapped-Lug

*Shipping Container Stadium Hole Connector 5,000 lbs*

AnyWich

*Connectors to Metal and/or Wooden Frames*

**Casters**

**TriWich is the only Product in the World that can pickup EVERY Casters in the World !**

**TriWich T2 (1,667 FT-LBS)**

**T2 (T22)**

**1.5" Cube (5 x 1/4")(250)**

Tri60.T2.T22 (1,667 FT-LBS) / RWM Series 46 Kingpin 1,200 lbs/caster (3,600 Dolly)(7,200 Automotive Axle)

*Dolly 3x Rating*

Tri60.T2.T22 (1,667 FT-LBS) / RWM Series 48 Maintenance Free "Freedom" 1,500 lbs/caster (4,500 dolly)(9,000 lb Automotive Axle)

*Dolly 3x Rating*

Tri60.T2.T22 (1,667 FT-LBS) / RWM Series 65 Kingpinless "RWM Patent" 2,000 lbs/caster (6,000 dolly)(12,000 lb Automotive Axle)

*Dolly 3x Rating*

**Tri60.T3 (7,000 FT-LBS)**

**T3 (T36/T37)**

**2.0" Cube (5 x 3/8")(375)**

Tri60.T3.T36 (7,000 FT-LBS) / RWM Series 75 Kingpinless Heavy Duty 6,000 lbs/caster (18,000 lb dolly)(36,000 Automotive Axle)(12,000 Shipping Container Axle)

*Dolly 3x Rating*

Tri60.T3.T37 (7,000 FT-LBS) / RWM Series 76 Kingpinless Heavy Duty 7,000 lbs/caster (21,000 lb dolly)(14,000 Shipping Container Axle)

*Dolly 3x Rating*

**Tri60.T5 (33,000 FT-LBS)**

**T5 (T51/T52/T54)**

**2.5" Cube (5 x 1/2")(500)**

Tri60.T5.T51 (33,000 FT-LBS) / RWM Series 85 Kingpinless Heavy Duty 10,000 lbs/caster (30,000 lb dolly)(20,000 Shipping Container Axle)

*Dolly 3x Rating*

Tri60.T5.T52 (33,000 FT-LBS) / RWM Series 95 Kingpinless Heavy Duty 20,000 lbs/caster (60,000 lb dolly)(40,000 Shipping Container Axle)

*Dolly 3x Rating*

Tri60.T5.T54 (33,000 FT-LBS) / RWM Series 125 Kingpinless Heavy Duty 40,000 lbs/caster (120,000 lb dolly)(80,000 Shipping Container Axle(2x)(3x))

*Dolly 3x Rating*

## Lifting Options

### Tri-Jack

*(Used for installing Casters under 23" overall height)*

#### Tri-Jack "The Modular Shipping Container Jack" (0-23" in 90 seconds)

Tri-Jack.2310	Tri-Jack "The Modular Shipping Container Jack" (Range 0" to 23" in 90 sec)(5-tons)
Tri-Jack.2316	Tri-Jack "The Modular Shipping Container Jack" (Range 0" to 23" in 180 sec)(8-tons)

### Tri-UP

#### Tri-UP - Load and Unload Chassis, Flatbeds, Install LiftWich Axles & Install Casters>23" Up to 70"(1.7m)

Tri-UP.1303	Tri-UP One Automated Lift 30" (0.7m) / 3,000 lbs/Corner (3k)(Empty Container 12k)
Tri-UP.1309	Tri-UP One Automated Lift 30" (0.7m) / 9,000 lbs/Corner (9k)(50% Container 36k)
Tri-UP.1313	Tri-UP One Automated Lift 30" (0.7m) / 13,000 lbs/Corner (13k)(75% Container 52k)
Tri-UP.1317	Tri-UP One Automated Lift 30" (0.7m) / 17,000 lbs/Corner (17k)(100% Container 68k)

*Tri-Up 30"s are necessary for Casters with Over All Heights (OAH) greater than 23"*

#### Tri-UP Options / Leg High 10" increments and High Cube Guild Bar increase/bar

UP.Lift.10IN	Tri-UP Option Increase Lift Bar 10" up to max 70" (1.7m)
UP.High.Cube	Tri-UP Option High Cube Guide Bar Adder
UP.Battery.Lithium	Battery Upgrade from AGM to Lithium (12V)(100aH)

*If you need help, please send us an email to [Engineering@TriWich.com](mailto:Engineering@TriWich.com)*

## Towing / Tugging / Caddy Option

### TrailerCaddy

#### DJProduct TrailerCaddy

TrailerCaddy.1206	DJProduct TrailerCaddy 06K Lift 36v: 12,000 GVWR / 6k Lift / with Pintle Hook Adapter (6k36v)
TrailerCaddy.1806	DJProduct TrailerCaddy 06K Lift 48v: 18,000 GVWR / 6k Lift / with Pintle Hook Adapter (6k48v)
TrailerCaddy.3015	DJProduct TrailerCaddy 15K Lift 36v: 30,000 GVWR / 15k Lift / with Pintle Hook Adapter (15k36v)
TrailerCaddy.4515	DJProduct TrailerCaddy 15K Lift 48v: 45,000 GVWR / 15k Lift / with Pintle Hook Adapter (15k48v)
TrailerCaddy.7530	DJProduct TrailerCaddy 30K Lift 48v: 75,000 GVWR / 30k Lift / with Pintle Hook Adapter (30k48v)

## Why HitchWich is "The Official Military Shipping Container Dolly"

#### Military Shipping Container Dolly RFQ:

**1) Portable** (not permanently fixed) and able to be stored in the container when not in use. **2) Portable** (not permanently fixed) and able to be stored in the container when not in use **3) Manual hydraulic jack system** **4) Capable of Manual movement** Integrated tow bar to facilitate forklift/tractor/tug movement **5) Front wheel steerable, real wheel fixed** **6) Minimum 10 metric ton lift capacity** **7) Rubber tires** Capable of both paved and unpaved compact dirt/earth transport. **8) Compatible with military aircraft for storage container transport (C-130, C-17, C-5) Similar to TriWich Tri60**

T54.P414	Tandemloc	TriWich	Delta	Delta%
<b>Container</b>	20-FT only	6, 10, 20, 40 FT		
<b>Installation</b>	Crane	Tri-Jacks / Tri-UP		
<b>Dolly</b>	\$54,153	\$32,846	(\$21,307)	39%
<b>Towbar</b>	\$4,123	\$1,528	(\$2,595)	63%
<b>Shipping</b>	\$3,688	\$1,844	(\$1,844)	50%
<b>Total</b>	<b>\$61,963</b>	<b>\$36,218</b>	<b>(\$25,745)</b>	<b>42%</b>

Plus we offer over 36 Shipping Containers Dolly Solutions from 6,000 lbs to 297,000 lb Containers

No Wonder TriWich is The Official Military Shipping Container Dolly!

### Seeing is Believing Videos

- <https://youtu.be/dFNubFPKFFk>
- [https://youtu.be/k\\_79rboURAE](https://youtu.be/k_79rboURAE)
- <https://youtu.be/38d26rt5xEg>
- <https://youtu.be/fDEY4tnu-i8>
- <https://youtu.be/f3q6TI9ZRoo>
- <https://youtu.be/WiauKd56lJE>
- <https://youtu.be/wBAJg1ZY0mY>

HitchWich: Installation Training / RAW unedited / Pneumatic 3-Caster and 2-Caster Rule  
 Tri-Jack: The Shipping Container Jack - 23" in 90 seconds - 5 minutes to move a container (8HC)  
 HitchWich: Bounding a 40ft Shipping container with a forklift  
 HitchWich: US Navy Wagon V-Bar for Pickup Truck on On Curvy Roads or Over Fields  
 HitchWich: AT&T 60,000 lb. Shipping Container Production Caddy  
 HitchWich "Ball Hitch Coupler" Forklifts Tractors Pickups Shipping Container Solutions  
 HitchWich Switch Swapping T5.Pneumatic to T3.Nyatron in Real Time

# TriWich® Modular Mobility Solutions

Tri-UP Straight Up 30"-70" / 90-130": Load/Unload Chassis, Flatbeds, & LiftWich / Tri-Jack 23" in 90 seconds 40k/64k



## Tri-Jack / Tri-UP



### Tri-Jack

- \* Tri-Jack hydraulic 23" Long Ram Jack installs in seconds (left)
- \* Lift time, 23" in 90 sec with 5T(10k)/corner (40k container)
- \* Lift time, 23" in 180 sec with 8T(16k)/corner(64k container)

**We improved Tri-Jack again and were going to patent it,  
However, we realized we could higher with Tri-UP**

### Tri-UP

#### "The Mobile Depot"

#### Off-load Shipping Container Anywhere

##### Eight Lift Levels:

- \* 30" (0.7m) Casters overall height over 23" to 30"
- \* 40" 1.0m) TriWich LiftWich (Horizontal Elevator lift)
- \* 50" (1.2m) Standard Flatbeds
- \* 60" (1.5m) Standard Semi-Chassis
- \* 70" (1.7m), 90" (1.2m), 110" (2.7m), & 130' (3.3m) TBD

##### Four Capacity Models

- \* 12,000 lb. (Empty Containers 20/40/53 footers) Order Now
- \* 36,000 lb. (50% container) Launch May 2024
- \* 52,000 lb. (75% container) Launch Customer Demand
- \* 68,000 lb. (100% container) Launch Customer Demand

##### Empty Container 12,000 lb. System Focus

- \* Tri-Up is **100% modular**
- \* 288 lbs./Corner (**Largest Component is 70 lbs**)
- \* Fits in the back of a **pickup truck**
- \* **Automated with Remote Control**
- \* **One person** can install and operate the entire system of 4 legs
- \* Off load a shipping container anywhere at any time.

# TriWich® Modular Mobility Solutions

Tri-UP Straight Up 30"-70" / 90-130": Load/Unload Chassis, Flatbeds, & LiftWich / Tri-Jack 23" in 90 seconds 40k/64k



		Tri-UP "The Mobile Depot"					
TriWich SKU	TriWich SKU Description	2024.01.23.05	Quantity	Pricing	Ext Price	Ext Wt (lbs)	Note
<b>Tri-Jack</b>							
<b>Tri-Jack 23" Modular Container Jack</b>							
Tri-Jack.2310	Tri-Jack "The Modular Shipping Container Jack" (Range 0" to 23" in 90 sec)(5-tons)						
Tri-Jack.2316	Tri-Jack "The Modular Shipping Container Jack" (Range 0" to 23" in 180 sec)(8-tons)						
<b>Tri-UP Single 30" Base Leg Models</b>							
<b>Tri-UP Single Automated 30" Base Leg Models</b>							
Tri-Up.1303	Tri-UP One Automated Lift 30" (0.7m) / 3,000 lbs/Corner (3k)(Empty Container 12k)						
Tri-Up.1309	Tri-UP One Automated Lift 30" (0.7m) / 9,000 lbs/Corner (9k)(50% Container 36k)						
Tri-Up.1313	Tri-UP One Automated Lift 30" (0.7m) / 13,000 lbs/Corner (13k)(75% Container 52k)						
Tri-Up.1317	Tri-UP One Automated Lift 30" (0.7m) / 17,000 lbs/Corner (17k)(100% Container 68k)						
<b>Tri-UP Two Automated 40" Base Leg Models</b>							
Tri-Up.2403	Tri-UP Two Automated Lift 40" (1.0m) / 3,000 lbs/Corner (6k)(Empty Container 12k)						
Tri-Up.2409	Tri-UP Two Automated Lift 40" (1.0m) / 9,000 lbs/Corner (18k)(50% Container 36k)						
Tri-Up.2424	Tri-UP Two Automated Lift 40" (1.0m) / 13,000 lbs/Corner (26k)(75% Container 52k)						
Tri-Up.2417	Tri-UP Two Automated Lift 40" (1.0m) / 17,000 lbs/Corner (34k)(100% Container 68k)						
<b>Tri-UP Options</b>							
UP.10.IN	Tri-UP Option Increase Lift Bar 10" up to max 70" (1.7m)						
UP.High.Cube	Tri-UP Option High Cube Guide Bar Adder						
UP.Lithium	Battery Upgrade from AGM to Lithium (12V)(100aH)						
<b>Four Legs</b>							
<b>Tri-UP 30"</b>							
<b>Tri-UP 40"</b>							
<b>Tri-UP 50"</b>							
<b>Tri-UP 60"</b>							
<b>Tri-UP 70"</b>							
Tri-Up.4703	Tri-UP Four Automated Lift 70" (1.7m) / 3,000 lbs/Corner (12k)(Empty Container 12k)						
Tri-Up.4709	Tri-UP Four Automated Lift 70" (1.7m) / 9,000 lbs/Corner (36k)(50% Container 36k)						
Tri-Up.4713	Tri-UP Four Automated Lift 70" (1.7m) / 13,000 lbs/Corner (52k)(75% Container 52k)						
Tri-Up.4717	Tri-UP Four Automated Lift 70" (1.7m) / 17,000 lbs/Corner (68k)(100% Container 68k)						
<b>Tri-UP 90"</b>							
<b>Tri-UP 110"</b>							
<b>Tri-UP 130"</b>							
<b>Tri-UP Terminology and Video Checklist/Training Section</b>							
Patent Approved	Tri-Lug						Stadium Hole Connector rated 40,000 lbs
Patent Pending							Can explain after patent lawyer gives green light
Patent Pending							Can explain after patent lawyer gives green light
Patent Pending							Can explain after patent lawyer gives green light
<a href="http://www.TriWich.com">www.TriWich.com</a>	<a href="mailto:Engineering@TriWich.com">Engineering@TriWich.com</a>						909.582.9591



# TriWich® Modular Mobility Solutions

LiftWich "The Highway Dolly" - Use your Pickup truck to Jack & Tow Shipping Container and go down the Highway



## LiftWich

The Gooseneck Jack and Tow Container System

Use your Pickup truck to Jack & Tow Shipping Container and Drive Down the Highway (Enabling ANY Mobile Business concept you can imagine)



# TriWich® Modular Mobility Solutions

LiftWich™ "The.HighWay.Dolly": Gooseneck.V-Frame / Tri-Plug / Dynamic Corners / Saddles / BaseWich / BoXLeSS / WHeeLLeSS



LiftWich							
"The Highway Dolly"							
Eliminate 10,000 lbs of metal (No Semi-Truck, No Chassis, No Flatbed) >> Save \$200k CAPEX, lower fuel & maintenance cost Moving a 40ft container under 10,000 lbs. / NO Commercial Driver License (CDL) required / NO Stopping at the Weigh Station (saving 3 hrs/day)							
TriWich SKU	TriWich SKU Description	2024.03.19.14	Quantity	Pricing	Ext Price	Ext Wt (lbs)	Note
Two Years of In-Field Testing Complete				Automation for Single User to Operate April 2025			
Official USMCA Launch May 2024				Global Launch APAC 2025 / EMEA 2026			
<b>MUST HAVE</b> V-Frame							
V-Frame System							
LiftWich.V-Frame LiftWich V-Frame Full System (Gooseneck V-Frame, Dynamic Corners, Tri-Coupler, HeimJoint Struts) <i>V-Frame System consists of the Gooseneck V-Frame, Upper Casting Corner Tri-Plugs, Lower Casting Corner Dynamic Corners, Sntatch Block Tri-Coupler, &amp; Heim Joint Struts One V-Frame can operate any Shipping Container size 6, 10, 20, 30, 40, 45, 53 foot. One V-Frame One registration for every trailer size.</i>							
<b>MUST HAVE</b> Tri-Trailers							
Tri-Trailers System (Container Saddles with BaseWich)							
Tri-Trailer.1056 Single Axle Electric Brake Trailer 5,660 lbs. (Up to 20ft Shipping Containers)							
Tri-Trailer.1070 Single Axle Electric Brake Trailer 7,000 lbs. (Up to 20ft Shipping Containers)							
Tri-Trailer.2113 Double Axle Trailer with Electric Brakes (Up to 40ft Shipping Container)(11k/17k)							
Tri-Trailer.2140 Double Axle Trailer with Electric Brakes (Up to 40ft Shipping Container)(14k/21k)							
Tri-Trailer.3168 Triple Axle Trailer with Electric Brakes (Up to 40ft Shipping Container)(16k/24k)							
Tri-Trailer.3210 Triple Axle Trailer with Electric Brakes (Up to 53ft Shipping Container)(21k/30k) <i>Tri-Trailers come with Modular Axles 1-2-3 , 40ft EZ-Connect Cable, Junction Box, Electric Brakes and Casting Corner Taillights Multiple Trailers can be used with one V-Frame System. Run multiple jobs at one time and keep your team on the go.</i>							
<b>MUST HAVE</b> BoXLeSS							
Boxless							
LiftWich.BoXLeSS LiftWich BoXLeSS Travelling Without a Shipping Container (BoXLess, TowHitch-Mast) <i>BoXLeSS enables you to drive the axles (Container Saddles) down the highway</i>							
Optional WHeeLLeSS							
WHeeLLeSS							
LiftWich.WHeeLLeSS WHeeLLeSS - Highway Travel WITHOUT Trailer & V-Frame Automated Installation <i>WHeeLLeSS enables you to drive the V-Frame without the Container Saddles(axles) down the highway WHeeLLeSS is a Tee Frame that the V-Bar rests on and enables automated installation of the V-Frame</i>							
Optional AutoSaddles							
AutoSaddles							
LiftWich.AutoSaddles LiftWich Automated Trailer Axle Option with Remote Control (2 or 3 axle only) <i>AutoSaddles enables remote control of your axles (Container Saddles), this is optional, but if you work alone, this is a feature recommended by our Trailblazers in field testing</i>							
Optional Tri-UP							
Tri-UP							
Tri-Up.1403 Tri-UP One Automated Lift 40" (1.0m) / 3,000 lbs/Corner (3k)(Empty Container 12k)							
Tri-Up.1409 Tri-UP One Automated Lift 40" (1.0m) / 9,000 lbs/Corner (9k)(50% Container 36k) <i>Tri-UP enables you lift a shipping container 70" (1.7m) if you like. For LiftWich, it enables a horizontal lift like an elevator. We could lift a glass container and drive it down the highway</i>							
<b>LiftWich Terminology and Video Training Section</b>							
Patent Approved V-Frame							
Patent Approved Tri-Plug							
Patent Approved Tapped-Lug							

Patent Approved	Tri-Lug
Patent Approved	Dynamic Corners
Patent Approved	Tri-Coupler
Patent Approved	Heim Joint Struts
Patent Pending	BoXLeSS
Patent Pending	TowHitch-Mast
Patent Pending	WHeeLLeSS
Patent Pending	Saddles / Modular Axles
	BaseWich
	EZ Connect
	53ft Wall
	DMV / DOT / VIN

**Questions & Answers**

DOT / DMV / VIN	DOT is required for towing above 15,000 lbs. LiftWich is a DMV Registered trailer with an assigned VIN. Towing an empty 40ft container is under 10,000 lbs.
25,000 lb Equivalent	LiftWich eliminates 10,000 lbs of metal (NO Chassis / NO Semi-Truck) LiftWich @ 15,000 lbs. would legally be equivalent to a Chassis/Tiltbed at 25,000 lbs.
No Semi-Truck	LiftWich eliminates the need for a Semi-Truck to move containers. \$200,000 investment savings & Cost of Ownership 70% of a Semi-Truck
No Chassis/Flatbed	LiftWich eliminates the need for a chassis or flatbed. which mean spending fuel fo trucker Deadhead is reduced 90%
No CDL (Save \$\$\$)	Moving a 40ft container is under 10,000 lbs., which means it is like moving a boat trailer or 5th Wheeler, so a Commercial Driver License (CDL) is not required!
No Scales (Save time)	If you are pulling a container with a a 250, no need to stop at the Weigh Stations and spend 3 hours/day not having to waiting in line to weigh your trailer!
Multi-Trailer	One V-Frame can be used to manage multiple Rear Trailer systems /jobs (Reducing the average "trailer" under 20k)
Zero Down Financing	Business owners over 3 years can qualify for LiftWich with Zero Down Financing (we hire you for shipping and handling)

**Cost of Ownership**

**Cost of Ownership**  
70% less  
than a Semi-Truck

TriWich

Recommends a 250

Why Strength of Tow Hitch

- Investment
- Monthly Truck Payment
- Monthly Insurance
- Monthly Licensing Cost
- Monthly Certified Driver License
- Monthly Maintenance Cost
- Monthly Gas Cost

**Preliminary, but you get the point...**  
Assumptions are intentionally conservative  
Real values would probably result in a factor 4  
**Meaning 400% difference or 25% the cost of a Semi-Truck**

Horse Power

Total Monthly Cost of Ownership

Cost of Ownership %

Truck Base Model  
6 years at 0% interest

- Miles Per month
- Miles Per Gallon
- Gallons per Month
- Cost per Gallon

	550	450	350	250	150
	\$6,078	\$3,736	\$2,935	\$2,034	\$1,506
	299%	184%	144%	LiftWich	LiftWich
	\$200,000	\$100,000	\$75,000	\$50,000	\$35,000
	\$2,778	\$1,389	\$1,042	\$694	\$486
	\$300	\$250	\$200	\$150	\$100
	\$100	\$80	\$60	\$40	\$20
	\$100	\$100	\$100	\$0	\$0
	\$300	\$250	\$200	\$150	\$100
	\$2,500	\$1,667	\$1,333	\$1,000	\$800
	4,000	4,000	4,000	4,000	4,000
	8	12	15	20	25
	500	333	267	200	160
	\$5.00	\$5.00	\$5.00	\$5.00	\$5.00

**Cost Of Ownership 70% lower is the reason why the LiftWich will impact the global Moving and Transport Industry**

**The Making of LiftWich**

LiftWich will be a worldwide phenomenon. We are already asked to manufacture in APAC in Australia

2022-04-15	<a href="https://youtu.be/yLnDny4VLxE">https://youtu.be/yLnDny4VLxE</a>	LiftWich S1 One Axle , Manual Winch - 35mph - Gooseneck Jack & Tow Shipping Container Solution
2022-06-18	<a href="https://youtu.be/--M8ThqrzQ">https://youtu.be/--M8ThqrzQ</a>	LiftWich S2 Electric Winch and Struts - 65mph - Gooseneck Jack & Tow Shipping Container Solution
2022-08-15	<a href="https://youtu.be/LC3KquXZ4ds">https://youtu.be/LC3KquXZ4ds</a>	LiftWich S3 Double Axle Container Saddles - 70mph - Gooseneck Jack & Tow Shipping Container Solution
2022-09-17	<a href="https://youtu.be/NmRc1mwE3Jw">https://youtu.be/NmRc1mwE3Jw</a>	LiftWich S4 Brakes, Lights, VIN, License Plate / Gooseneck Jack & Tow Container Solution
2022-10-30	<a href="https://youtu.be/812mpP0BfUM">https://youtu.be/812mpP0BfUM</a>	LiftWich S5 Powder Coated, Wrapped & Ready For #SEMA2022
2022-11-18	<a href="https://youtu.be/sZYmw6H8XiY">https://youtu.be/sZYmw6H8XiY</a>	LiftWich S7 40ft Shipping Container 70 mph - Eliminating a Semi-Truck and Chassis
2023-03-25	<a href="https://youtu.be/giufazdFE_1">https://youtu.be/giufazdFE_1</a>	LiftWich V2 "The Highway Doll" / Max Strength Gooseneck V-Frame BoXLeSS Driving Test / RAW
2023-04-06	<a href="https://youtu.be/7u9kn2aDLjw">https://youtu.be/7u9kn2aDLjw</a>	LiftWich V2 "The Highway Dolly" / CAD Simulation / Eliminating 10k lbs of metals / Patent Approved
2023-05-18	<a href="https://youtu.be/agGDf0UyOoo">https://youtu.be/agGDf0UyOoo</a>	LiftWich V2 "The Highway Dolly" / U-Turn in a Cul-De-Sac - Imagine a U-Turn with a 40ft container

CAD SIM

2023-05-29	<a href="https://youtu.be/Fw0rRZT6gyc">https://youtu.be/Fw0rRZT6gyc</a>	LiftWich V2 "The Highway Dolly" / 20ft Tiny Home / Mike Eicher @ Homeland Fireworks						
2023-06-05	<a href="https://youtu.be/BEyJveIF15A">https://youtu.be/BEyJveIF15A</a>	LiftWich V2 "The Highway Dolly" / 40ft Container 12,160 lbs / Mike Eicher @ Homeland Fireworks						Nr1 Video
2023-12-21	<a href="https://youtu.be/RvVSPDpV5Jg">https://youtu.be/RvVSPDpV5Jg</a>	LiftWich S8 - BoXLeSS - Traveling Without a Shipping Container (Without a Box)						
TBD	<b>Coming April 2024</b>	LiftWich V3 "The Highway Dolly" / Automation (WHeeLLeSS)(AustoSaddles)(Tri-UP)						
<b>Milestones &amp; Next Steps</b>								
<b>Milestones</b>								
LiftWich V1 Prototype	Q4 2022 - October 2022 Prototype V1 competed (See YouTube S1-S6 how we developed LiftWich Step By Step)(Sold Immediately)							
LiftWich V2 Max Strength	Q1 2023 - March 2023 40% stronger than V1: Double V, Dynamic Corners, Tri-Plug, BoXLeSS CS/VT (Customers requested Pre-Orders)(Sold immediately)							
LiftWich CAD Simulation	Q2 2023 - April 2023 (@ NPSA in Vegas) 1 minute CAD installation simulation - 5 Steps Showing how LiftWich is installed.							
LiftWich & Tri-UP	Q4 2023 - December 2023 Successful Tri-UP Prototype / Patent Pending / Enables horizontal lift of container							
LiftWich V3 Automation	Q1 2024 - Automation Enabling ONE Operator (V-Frame Installation / Trailer Axle / Tri-UP)							
LiftWich & Tri-UP USMCA	Q2 2024 - US-Mexico-Canda (USMCA) Roll Out target National Portable Shipping Associate (NPSA) May 5-7, 2024, Washington DC							
LiftWich & Tri-UP APAC	Q2 2025 -Launching Manufacturing / Initial Distributor rights in Asia-Pacific (APAC) (Kick-Off Meeting Q3.23 / Formalizing Q3.24)							
LiftWich & Tri-UP EMEA	Q2 2026 -Launching Manufacturing / Initial Distributor rights in Europe-Middle East & Africa (EMEA) (pending completion of APAC agreement)							
TriWich International	Q2 2027 - Roll out International Country Level Distributor Agreements (Exclusive ONE Distributor per Country)(Aligned with Initial Manufacturing/Distributor)							
<a href="http://www.TriWich.com">www.TriWich.com</a>		<a href="mailto:Engineering@TriWich.com">Engineering@TriWich.com</a>						<b>909.582.9591</b>

# TriWich® Modular Mobility Solutions

Angled Wheel Dolly: 99,000 lbs AeroWich, 18,000 lbs 32" Semi-Trucks, 6,000 lbs 24" Electric-Vehicle, 2,400 lbs 18" Supercars

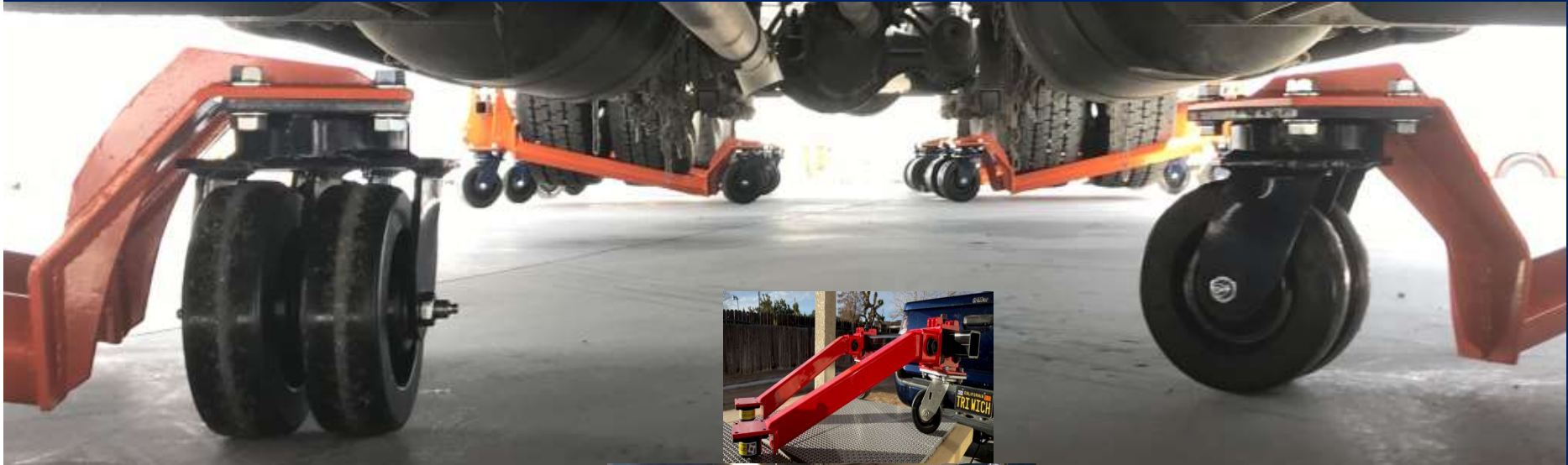


## Modular Wheel Dollies

Same TriWich Tri60 pick up a Supercar (with 2" clearance) a Semi-Truck and 737 airplane

Light Duty 18" 2,500 lbs/tire (Ultra Low 1.75" Caster) / Medium Duty 28" 6,000 lbs/tire (RV/EV) / Heavy Duty 28" 18,000 lbs/tire (Semi-Truck)

Tarmac Aircraft Wheel Dollies 99,000 lbs/tire (Four TriWich Tri60 system with Airplane Jacking Point Jacks)



[www.TriWich.com](http://www.TriWich.com)

[Engineering@TriWich.com](mailto:Engineering@TriWich.com)

909-582-9591

# TriWich® Modular Mobility Solutions

Angled Wheel Dolly: 99,000 lbs AeroWich, 18,000 lbs 32" Semi-Trucks, 6,000 lbs 24" Electric-Vehicle, 2,400 lbs 18" Supercars



**TriWich**

**Modular Mobility Solutions**

**The Smallest Strongest Most Diverse Dolly Worldwide**

**TriWich is the only Product in the World that can pickup EVERY Casters in the World !**

TriWich SKU	TriWich SKU Description	2024.03.14.19	Quantity	Pricing	Ext Price	Ext Wt (lbs)	Note
<b>Angled Wheel Dolly (AWD) "The 32" Dualy Wheel Dolly" up to 18,000 lbs/tire</b>							
AWD T1.16" Single Wheel 2,500 lbs/tire : Ultra Low 2" Profile Supercar / Luxury Performance / Low Riders							
Angled Wheel Dolly 18" up to 2,400 lbs/tire (4,800 axle) Ultra Low 2" Clearance for Supercar, Performance Luxury & Artistic Low Riders							
Angled.18.2400	Angled Wheel Dolly (AWD) T1.18" 2,400 lbs. (4,800 Axle)(Ultra Low 2" Profile "Supercar" Dolly)						
<i>Angled.18 Rear Caster is an OmniTrack 1" ball casters. This can only operate on smooth concrete without cracks. That is as low as we can go.</i>							
AWD T2 24" Standard Dually Wheels (2x11") - Electric Vehicle (EV) / Recreation Vehicles (RV)							
Angled Wheel Dolly 24" up to 6,000 lbs/tire (12,000 axle) - Electric Vehicle/ RV's							
Angled.24.2800	Angled Wheel Dolly (AWD) T2 24" 2,800 lbs. (Set of 1)(2,800 lbs/tire)(5,600 lbs/Axle)(Inside Durastan)(EV/RV Dolly)						
Angled.24.3600	Angled Wheel Dolly (AWD) T2 24" 3,600 lbs. (Set of 1)(3,600 lbs/tire)(7,200 lbs/Axle)(Inside Ergo GT)(EV/RV Dolly)						
Angled.24.6000	Angled Wheel Dolly (AWD) T2 24" 6,000 lbs. (Set of 1)(6,000 lbs/tire)(12,000 lbs/Axle)(Outside Nylatron)(EV/RV Dolly)						
<i>Angled.24 Rear Caster is 4" while the Front Casters are 6" used for Standard Single (any size) &amp; Dually (2x11") wheels under 6,000 lbs/tire</i>							
AWD T3 32" Semi-Truck Dually Wheels (2x15") - Semi-Truck / Firetruck / Cement Trucks / Buses							
Angled Wheel Dolly 32" up to 18,000 lbs/tire (36,000 Axle) - Semi-Trucks, Buses, Fire Trucks, Cement Trucks							
Angled.32.6500	Angled Wheel Dolly (AWD) T3 32" 6,500 lbs. (Set of 1)(6,500 lbs/tire)(13,000 lbs/Axle)(Inside Durastan)(Semi-Truck Dolly)						
Angled.32.7600	Angled Wheel Dolly (AWD) T3 32" 7,600 lbs. (Set of 1)(7,600 lbs/tire)(15,200 lbs/Axle)(Inside Durastan)(Semi-Truck Dolly)						
Angled.32.9600	Angled Wheel Dolly (AWD) T3 32" 9,600 lbs. (Set of 1)(9,600 lbs/tire)(19,200 lbs/Axle)(Inside Ergo GT)(Semi-Truck Dolly)						
Angled.32.X800	Angled Wheel Dolly (AWD) T3 32" 18,000 lbs. (Set of 1)(18,000 lbs/tire)(36,000 lbs/Axle)(Outside Nylatron)(Semi-Truck Dolly)						
<i>Angled.WD.32 Rear Caster is 6" while the Front Casters are 8" used for Semi-Truck Single (any size) &amp; Dually (2x15") wheels under 18,000 lbs/tire</i>							
<b>AeroWich: "The Airport Tarmac Dolly" Up to 99,000 lbs/tire</b>							
Used for Damaged Landing Gear or Flat Tires ON or OFF the Runway							
Why Double Wheels? Airport Tarmac runways are designed for water run-off, or half the surface area is voided. To maintain Max capacity double wheeled casters are necessary.							
Why Wider Wheel? Wider Wheel cover more of the voided Tarmac surface and reduce vibration, which means longer life and lower "Cost of Ownership"							
<b>AeroWich "The Airport Tarmac Dolly" with Double 6" Wheels</b>						<b>60,000 lbs/tire (150,000 lb Aircraft)</b>	
AeroWich.T36.0602	AeroWich "The Airport Tarmac Dolly" 2x6"x2" 13,200 lbs/tire (33,000 lb. Aircraft)					13,200	
AeroWich.T37.0602	AeroWich "The Airport Tarmac Dolly" 2x6"x3" 21,000 lbs/tire (52,000 lb. Aircraft)					21,000	
AeroWich.T40.0603	AeroWich "The Airport Tarmac Dolly" 2x6"x3" 30,000 lbs/tire (75,000 lb. Aircraft)					30,000	
AeroWich.T52.0603	AeroWich "The Airport Tarmac Dolly" 2x6"x3" 60,000 lbs/tire (150,000 lb. Aircraft)					60,000	
<b>AeroWich "The Airport Tarmac Dolly" with Double 8" Wheels</b>						<b>84,000 lbs/tire (210,000 lb Aircraft)</b>	
AeroWich.T36.0802	AeroWich "The Airport Tarmac Dolly" 2x8"x2" 18,000 lbs/tire (45,000 lb. Aircraft)					18,000	
AeroWich.T37.0803	AeroWich "The Airport Tarmac Dolly" 2x8"x3" 21,000 lbs/tire (52,000 lb. Aircraft)					21,000	
AeroWich.T51.0803	AeroWich "The Airport Tarmac Dolly" 2x8"x3" 30,000 lbs/tire (75,000 lb. Aircraft)					30,000	
AeroWich.T51.0804	AeroWich "The Airport Tarmac Dolly" 2x8"x4" 30,000 lbs/tire (75,000 lb. Aircraft)					30,000	
AeroWich.T52.0803	AeroWich "The Airport Tarmac Dolly" 2x8"x3" 60,000 lbs/tire (150,000 lb. Aircraft)					60,000	
AeroWich.T52.0804	AeroWich "The Airport Tarmac Dolly" 2x8"x4" 60,000 lbs/tire (150,000 lb. Aircraft)					60,000	
AeroWich.T54.0804	AeroWich "The Airport Tarmac Dolly" 2x8"x4" 84,000 lbs/tire (210,000 lb. Aircraft)					84,000	
<b>AeroWich "The Airport Tarmac Dolly" with Double 10" Wheels</b>						<b>99,000 lbs/tire (247,000 lb Aircraft)</b>	
AeroWich.T51.1003	AeroWich "The Airport Tarmac Dolly" 2x10"x3" 30,000 lbs/tire (75,000 lb. Aircraft)					30,000	

AeroWich.T51.1004	AeroWich "The Airport Tarmac Dolly" 2x10"x4" 30,000 lbs/tire (75,000 lb. Aircraft)	30,000
AeroWich.T52.1003	AeroWich "The Airport Tarmac Dolly" 2x10"x3" 60,000 lbs/tire (150,000 lb. Aircraft)	60,000
AeroWich.T52.1004	AeroWich "The Airport Tarmac Dolly" 2x10"x4" 60,000 lbs/tire (150,000 lb. Aircraft)	60,000
AeroWich.T54.1004	AeroWich "The Airport Tarmac Dolly" 2x10"x4" 99,000 lbs/tire (247,000 lb. Aircraft)	99,000
<b>AeroWich "The Airport Tarmac Dolly" with Double 12" Wheels</b>		<b>99,000 lbs/tire (247,000 lb Aircraft)</b>
AeroWich.T51.1203	AeroWich "The Airport Tarmac Dolly" 2x12"x3" 30,000 lbs/tire (75,000 lb. Aircraft)	30,000
AeroWich.T52.1203	AeroWich "The Airport Tarmac Dolly" 2x12"x3" 60,000 lbs/tire (150,000 lb. Aircraft)	60,000
AeroWich.T54.1204	AeroWich "The Airport Tarmac Dolly" 2x12"x4" 99,000 lbs/tire (247,000 lb. Aircraft)	99,000

DBG Cliftnotes: You want the most optimal "Cost Of Ownership" solution. Go as BIG and WIDE as your budget will allow you go. Every concession cost you 20% per year

## Casters

### Off-Road / On-Road / Inside /Outside / Shock Absorbing / (100% USA Made)

The Wheel Dolly Market

Casters

#### Wheel Dolly Market - Strongest Wheel Dollies in the world

##### REAL APPLICATIONS

Toyota (Saline, MI) New R&D production line for a 9,000 lbs SUV  
**Peterbilt division TranPower** (USA Semi-Truck Manufacture based on Escondido, CA) **E-Transmissions** Heavy-Duty electronic transmissions.  
**Kenworth Semi-Truck** (Renton WA) Production Line moving 15,000 lbs Drive Axles without Transmissions  
**BLT Ready Mixed Concrete** (Yuma, AZ) Maintenance of the largest rotating Ready Mix Semi-Truck  
**MidWest Bus Corp** (Owosso, MI) City Buss Maintenance  
**Smithsonian** (Washington DC) Museum **45,000 lb Fire Truck** used during the 2011 9-11 attack (**Sponsored by Pentagon Heroes**)  
**Iveco** (EU Italy) **First Dually 15" 18,000 lbs/tire Wheels** (2x15"+2"gap) for European OEM Semi-Truck and Bus Manufacturer  
 And numerous private individuals with heavy boats, 5th wheelers, and dually wheeled vehicles

##### COMPETITIVE

TriWich Dolly 3x Rating is based on 3 casters, while our competitors' ratings are based on 4 casters and every wheel has the same load.

##### MARKETING

##### Wheel Dolly Capacity Comparison:

		Caster(1T)	Tire(3T)	Engine(6T)	Rear 40%	Vehicle
GoJack.6313	Ratchet Dolly 13" 1537 lbs/tire (limited design and your leg strength)(3" casters)	550	1,650	3,300	2,200	5,500
Angled.WD.18.2400	Angled Wheel Dolly 18" 2,400 lbs/tire (1"/4" Casters) 2" Profile Supercars	800	2,400	4,800	3,200	8,000
Angled.WD.24.6000	Angled Wheel Dolly 24" 6,000 lbs/tire (4"/5" Casters) (2x11") Dually RV/EV	2,000	6,000	12,000	8,000	20,000
Angled.WD.32.X800	Angled Wheel Dolly 32" 18,000 lbs/tire (6"/8" Casters) Semi-Truck Fire Trucks	6,000	18,000	36,000	24,000	60,000
The Iron Tire	Iron Tire Aircraft Flat Tire Dolly (20,000 lbs. Capacity) (Prepare for Sticker Shock)	6,000	18,000	36,000	24,000	60,000
AeroWich.T54.1204	AeroWich Aircraft Tarmac Wheel Dollies 99,000 lbs/tire: Gulfstream, 737, 747	33,000	99,000	Aircraft	247,500	

##### Wheel Dolly Dually (Length) Comparison:

	16"	20"	24"	28"	32"
Dually wheel definition is: Tire Width x2 + 2 inch gap. How big is your dually	7	9	11	13	15

##### TOOLS

Wrench or an impact drill/gun for nut and bolt assembly. Floor Jack for lifting from front or Two Bottle Jacks from the sides

##### LIFTING

Lifting methods depend on customer preference and can be accomplished with a floor jack, bottle jack or or other methods customized to specific application.

##### ASSESSORY

One Floor Jack Adapter is necessary per system if you are planning to use a standard floor jack

##### TRI60 UNIVERSAL DOLLY

**TriWich Tri60 enabled the highest capacity wheel dollies in the world (99,000 lbs/tire)**

Automotive Wheel Dollies comes with two TriWich Tri60s, while the Aircraft Tarmac Dollies come with four TriWich Tri60s.

With Four TriWich Tri60s and four Tri-Bars, you can create a universal dolly to pick up anything in your house, garage, shop or factory.

With Tri-Lugs you can pick up Shipping Containers and with AnyWich you can pick up machinery

TriWich offers machinery connector and standard bars for different application, for example 28" is our Door way bar

#### Wheel Dolly Market - Strongest Wheel Dollies in the world

##### Videos

<a href="https://youtu.be/eau6a3brVHI">https://youtu.be/eau6a3brVHI</a>	Angled Wheel Dollies Up to 99,000 lbs/tire (And How Does It Work?)
<a href="https://youtu.be/9qGUj11nc6E">https://youtu.be/9qGUj11nc6E</a>	Angled Wheel Dollies: Supercars, EVs, RVs, Semi-Trucks & 747s (Up to 99,000 lbs/tire) (TriWich Origins)
<a href="https://youtu.be/HlOINo99cqc">https://youtu.be/HlOINo99cqc</a>	Angled Wheel Dolly MWD.T1.16 2,900 lbs/tire (Ultra Low 2" Profile ) Supercars & Luxury Performance
<a href="https://youtu.be/X3d7_9dwRzs">https://youtu.be/X3d7_9dwRzs</a>	Angled Wheel Dolly MWD.T3.28 / Prototype / Installation / Feedback to Engineering
Coming Soon	Angled Wheel Dolly 32" 18,000 lbs/tire (6"/8" Casters) new design for Iveco in Europe (28" was not long enough)

[Engineering@TriWich.com](mailto:Engineering@TriWich.com)

Pricing Valid 30 day until inflation is under control, Taxes and Shipping not included

USA +1909.582.9591

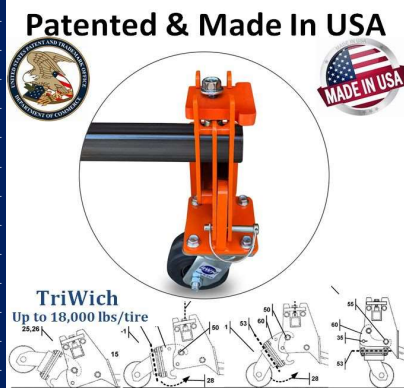
# TriWich® Modular Mobility Solutions

TriWich - Smallest Strongest Most Diverse Dolly Worldwide for EVERY caster in the world! 3"-25" up to 40 lbs./caster



## TriWich: Which Wich is Which? Products and Terminology

TriWich truly is the "Universal Dolly" (Casters from 1" to 25" up to 40,000 lbs/caster)(Max system 480,000 lb containers)



### Casters

TriWich is the only product in the world that can use every caster in the world  
Casters (100% USA Made)(1" to 25")(0 to 40,000 lbs/casster)(any material)



<b>Nylatron (NY)</b>	<b>Ergo GT (GT)</b>	<b>Durastan (DU)</b>	<b>Cast Iron (CI)</b>	<b>Urethan on Iron (UI)</b>	<b>Machined Steel (MS)</b>	<b>Shock Absorbing (SA)</b>	<b>Pneumatic (PN)</b>
Off-Road - Pneumatics - Gravel, Dirt, Sand, Snow, Lips				Inside - Durastan (DU) & Ergo GT (GT)			
On-Road - Nyaltron - Concrete, Asphalt, Tarmac Towing				Outside - Urethan on Iron (UI), Nylatron(NY), Ultra Thick Urethan (UT)			Oven - Cast Iron (CI)

Casters are split by caster plate size maximum capacity 2,000, 6,000, 7,000, 10,000, 20,000, 40,000 (T22, T36, T37, T40, T42, T51, T52, T54) as TriWich is limited by the caster plate

[www.TriWich.com](http://www.TriWich.com)

[Engineering@TriWich.com](mailto:Engineering@TriWich.com)

909-582-9591



# TriWich® Modular Mobility Solutions

Tri60/Casters: Off-Road-Pneumatic 25" (7,260 lbs) On-Road-Towing Nylatron 10" (33,000-lbs)



## TriWich Modular Mobility Solutions

The Smallest Strongest Most Diverse Dolly Worldwide

TriWich is the only Product in the World that can pickup EVERY Caster in the World

TriWich SKU	TriWich SKU Description	2024.03.18.09	Quantity	Pricing	Capa/Line
<b>Tri60.T2 (1,667 FT-LBS)</b>		<b>TriWich Casters</b>			<b>1.5" Cube (5 x 1/4") (250)</b>
<b>Tri60.T2.T21 (1,667 FT-LBS) / Omnitrack Ball Transfer Casters (Ultra Low 2" Profile Angled Wheel Dolly)</b>					<b>Dolly 3x Rating</b>
OmniTrack.9230	T11: OmniTrack.9230 (OmniTrack)(1x1"x1") (OAH:1-3/4")(850.lbs./caster)(1.5 lbs.) (OmniTrack) (Ball)			\$91.14	<b>2,550</b>
<b>Tri60.T2.T22 (1,667 FT-LBS) / RWM Series 46 Kingpin 1,200 lbs/caster (3,600 Dolly)(7,200 Automotive Axle)</b>					<b>Dolly 3x Rating</b>
46-CIR-0420-S	T22: 46-CIR-0420-S (Cast Iron)(1x4"x2") (OAH:5-5/8")(800.lbs./caster)(6.5 lbs.) (Kingpin.1200) (Swivel)			\$36.45	2,400
46-CIR-0520-S	T22: 46-CIR-0520-S (Cast Iron)(1x5"x2") (OAH:6-1/2")(1000.lbs./caster)(7.8 lbs.) (Kingpin.1200) (Swivel)			\$47.45	3,000
46-CIR-0620-S	T22: 46-CIR-0620-S (Cast Iron)(1x6"x2") (OAH:7-1/2")(1200.lbs./caster)(9.1 lbs.) (Kingpin.1200) (Swivel)			\$57.70	3,600
46-CIR-0820-S	T22: 46-CIR-0820-S (Cast Iron)(1x8"x2") (OAH:9-1/2")(1200.lbs./caster)(13.3 lbs.) (Kingpin.1200) (Swivel)			\$75.59	3,600
46-DUR-3220-S	T22: 46-DUR-3220-S (Durastan)(1x3-1/4"x1-1/2") (OAH:5-1/4")(400.lbs./caster)(6.7 lbs.) (Kingpin.1200) (Swivel)			\$55.32	1,200
46-DUR-0420-S	T22: 46-DUR-0420-S (Durastan)(1x4"x2") (OAH:5-5/8")(800.lbs./caster)(5.2 lbs.) (Kingpin.1200) (Swivel)			\$37.88	<b>Angled.18</b>
46-DUR-0520-S	T22: 46-DUR-0520-S (Durastan)(1x5"x2") (OAH:6-1/2")(1000.lbs./caster)(5.4 lbs.) (Kingpin.1200) (Swivel)			\$58.30	3,000
46-DUR-0620-S	T22: 46-DUR-0620-S (Durastan)(1x6"x2") (OAH:7-1/2")(1200.lbs./caster)(6.3 lbs.) (Kingpin.1200) (Swivel)			\$58.04	<b>Angled.24</b>
46-DUR-0820-S	T22: 46-DUR-0820-S (Durastan)(1x8"x2") (OAH:9-1/2")(1200.lbs./caster)(7.7 lbs.) (Kingpin.1200) (Swivel)			\$66.04	3,600
<b>Tri60.T2.T22 (1,667 FT-LBS) / RWM Series 48 Maintenance Free "Freedom" 1,500 lbs/caster (4,500 dolly)(9,000 lb Automotive Axle)</b>					<b>Dolly 3x Rating</b>
48-DUR-0420-S	T22: 48-DUR-0420-S (Durastan)(1x4"x2") (OAH:5-5/8")(800.lbs./caster)(8 lbs.) (Freedom.1500) (Swivel)			\$90.25	2,400
48-DUR-0520-S	T22: 48-DUR-0520-S (Durastan)(1x5"x2") (OAH:6-1/2")(1000.lbs./caster)(9 lbs.) (Freedom.1500) (Swivel)			\$89.54	3,000
48-DUR-0620-S	T22: 48-DUR-0620-S (Durastan)(1x6"x2") (OAH:7-1/2")(1200.lbs./caster)(10 lbs.) (Freedom.1500) (Swivel)			\$93.04	3,600
48-DUR-0820-S	T22: 48-DUR-0820-S (Durastan)(1x8"x2") (OAH:9-1/2")(1400.lbs./caster)(11 lbs.) (Freedom.1500) (Swivel)			\$101.04	4,200
48-GTB-0420-S	T22: 48-GTB-0420-S (Ergo GT)(1x4"x2") (OAH:5-5/8")(1050.lbs./caster)(7 lbs.) (Freedom.1500) (Swivel)			\$66.99	<b>3,150</b>
48-GTB-0520-S	T22: 48-GTB-0520-S (Ergo GT)(1x5"x2") (OAH:6-1/2")(1200.lbs./caster)(8 lbs.) (Freedom.1500) (Swivel)			\$162.97	3,600
48-GTB-0620-S	T22: 48-GTB-0620-S (Ergo GT)(1x6"x2") (OAH:7-1/2")(1500.lbs./caster)(10 lbs.) (Freedom.1500) (Swivel)			\$168.46	<b>Angled.24</b>
<b>Tri60.T2.T22 (1,667 FT-LBS) / RWM Series 65 Kingpinless "RWM Patent" 2,000 lbs/caster (6,000 dolly)(12,000 lb Automotive Axle)</b>					<b>Dolly 3x Rating</b>
2-65-FNB-0828-S	T22: 2-65-FNB-0828-S (Pneumatic)(2x8"x2.8") (OAH:11") (600.lbs./caster)(20 lbs.) (Kingpinless.02k) (Swivel)			\$405.66	<b>HitchWich 1K</b>
2-65-FNB-1041-S	T22: 2-65-FNB-1041-S (Pneumatic)(2x10"x4.1") (OAH:13") (960.lbs./caster)(22 lbs.) (Kingpinless.02k) (Swivel)			\$519.22	<b>HitchWich 2K</b>
65-GTB-0820-S	T22: 65-GTB-0820-S (Ergo GT)(1x8"x2") (OAH:10-1/8")(1800.lbs./caster)(11 lbs.) (Kingpinless.02k) (Swivel)			\$213.30	5,400
65-NYB-0420-S	T22: 65-NYB-0420-S (Nylatron)(1x4"x2") (OAH:5-5/8")(2000.lbs./caster)(8.5 lbs.) (Kingpinless.02k) (Swivel)			\$198.00	<b>6,000</b>
65-NYB-0520-S	T22: 65-NYB-0520-S (Nylatron)(1x5"x2") (OAH:6-1/2")(2000.lbs./caster)(9.5 lbs.) (Kingpinless.02k) (Swivel)			\$274.30	6,000
65-NYB-0620-S	T22: 65-NYB-0620-S (Nylatron)(1x6"x2") (OAH:7-3/4")(2000.lbs./caster)(11 lbs.) (Kingpinless.02k) (Swivel)			\$323.80	<b>Angled.24</b>
65-NYB-0820-S	T22: 65-NYB-0820-S (Nylatron)(1x8"x2") (OAH:10-1/8")(2000.lbs./caster)(12 lbs.) (Kingpinless.02k) (Swivel)			\$413.80	6,000
65-UIR-0820-S	T22: 65-UIR-0820-S (Urethane On Iron)(1x8"x2") (OAH:10-1/8")(1500.lbs./caster)(13 lbs.) (Kingpinless.02k) (Swivel)			\$573.45	4,500
<b>Tri60.T3 (7,000 FT-LBS)</b>		<b>T3 (T36/T37)</b>			<b>2.0" Cube (5 x 3/8") (375)</b>
<b>Tri60.T3.T36 (7,000 FT-LBS) / RWM Series 75 Kingpinless Heavy Duty 6,000 lbs/caster (18,000 lb dolly)(36,000 Automotive Axle)(12,000 Shipping Container Axle)</b>					<b>Dolly 3x Rating</b>
75-DUR-0630-S	T36: 75-DUR-0630-S (Durastan)(1x6"x3") (OAH:7-1/2")(2000.lbs./caster)(12.5 lbs.) (Kingpinless.06k) (Swivel)			\$173.48	<b>6,000</b>
75-DUR-0830-S	T36: 75-DUR-0830-S (Durastan)(1x8"x3") (OAH:10-1/8")(2500.lbs./caster)(16.5 lbs.) (Kingpinless.06k) (Swivel)			\$178.36	<b>Angled.32</b>
75-DUR-1030-S	T36: 75-DUR-1030-S (Durastan)(1x10"x3") (OAH:11-1/2")(2900.lbs./caster)(20 lbs.) (Kingpinless.06k) (Swivel)			\$200.27	8,700

75-DUR-1230-S	T36: 75-DUR-1230-S (Durastan)(1x12"x3")(OAH:13-1/2")(3500.lbs./caster)(22.5 lbs.) (Kingpinless.06k) (Swivel)	\$239.53	10,500
2-75-DUR-0620-S	T36: 2-75-DUR-0620-S (Durastan)(2x6"x2")(OAH:8")(2400.lbs./caster)(12.5 lbs.) (Kingpinless.06k) (Swivel)	\$245.40	7,200
2-75-DUB-0820-S	T36: 2-75-DUB-0820-S (Durastan)(2x8"x2")(OAH:10-1/8")(2800.lbs./caster)(15 lbs.) (Kingpinless.06k) (Swivel)	\$376.70	Angled.32
2-75-DUR-0825-S-SA	T36: 2-75-DUR-0825-S-VMS (Shock Absorbing DU)(2x8"x2-1/2")(OAH:11")(2100.lbs./caster)(27 lbs.) (Kingpinless.06k) (Swivel)	\$1,130.10	ShockWich 08k
2-75-DUR-1025-S-SA	T36: 2-75-DUR-1025-S-VMS (Shock Absorbing DU)(2x10"x2-1/2")(OAH:13")(3000.lbs./caster)(30 lbs.) (Kingpinless.06k) (Swivel)	\$1,614.43	ShockWich 12k
75-GTB-0625-S	T36: 75-GTB-0625-S (Ergo GT)(1x6"x2-1/2")(OAH:7-1/2")(2300.lbs./caster)(11.5 lbs.) (Kingpinless.06k) (Swivel)	\$277.82	6,900
75-GTB-0825-S	T36: 75-GTB-0825-S (Ergo GT)(1x8"x2-1/2")(OAH:10-1/8")(2400.lbs./caster)(15 lbs.) (Kingpinless.06k) (Swivel)	\$409.37	Angled.32
75-GTB-1030-S	T36: 75-GTB-1030-S (Ergo GT)(1x10"x3")(OAH:11-1/2")(3400.lbs./caster)(20 lbs.) (Kingpinless.06k) (Swivel)	\$512.10	10,200
2-75-GTB-0520-S	T36: 2-75-GTB-0520-S (Ergo GT)(2x5"x2")(OAH:7-1/2")(2400.lbs./caster)(11.5 lbs.) (Kingpinless.06k) (Swivel)	\$376.70	7,200
2-75-GTB-0620-S	T36: 2-75-GTB-0620-S (Ergo GT)(2x6"x2")(OAH:8")(3000.lbs./caster)(12.5 lbs.) (Kingpinless.06k) (Swivel)	\$344.60	9,000
2-75-GTB-0820-S	T36: 2-75-GTB-0820-S (Ergo GT)(2x8"x2")(OAH:10-1/8")(3600.lbs./caster)(15 lbs.) (Kingpinless.06k) (Swivel)	\$556.44	Angled.32
75-NYB-0630-S	T36: 75-NYB-0630-S (Nylatron)(1x6"x3")(OAH:7-1/2")(6000.lbs./caster)(12.5 lbs.) (Kingpinless.06k) (Swivel)	\$443.82	18,000
75-NYB-0830-S	T36: 75-NYB-0830-S (Nylatron)(1x8"x3")(OAH:10-1/8")(6000.lbs./caster)(16 lbs.) (Kingpinless.06k) (Swivel)	\$545.22	Angled.32
75-NYB-1030-S	T36: 75-NYB-1030-S (Nylatron)(1x10"x3")(OAH:11-1/2")(6000.lbs./caster)(21 lbs.) (Kingpinless.06k) (Swivel)	\$672.10	18,000
2-75-NYB-0520-S	T36: 2-75-NYB-0520-S (Nylatron)(2x5"x2")(OAH:7-1/2")(4000.lbs./caster)(12 lbs.) (Kingpinless.06k) (Swivel)	\$613.64	AeroWich.05
2-75-NYB-0620-S	T36: 2-75-NYB-0620-S (Nylatron)(2x6"x2")(OAH:8")(4400.lbs./caster)(13.5 lbs.) (Kingpinless.06k) (Swivel)	\$680.52	AeroWich.06
2-75-NYB-0820-S	T36: 2-75-NYB-0820-S (Nylatron)(2x8"x2")(OAH:10-1/8")(6000.lbs./caster)(16 lbs.) (Kingpinless.06k) (Swivel)	\$839.47	AeroWich.08
75-UIB-1030-S-INF	T36: 75-UIB-1030-S-INF (Urethane On Iron)(1x10"x3")(OAH:11-1/2")(5000.lbs./caster)(23 lbs.) (Kingpinless.06k) (Swivel)	\$948.35	15,000
<b>Tri60.T3.T37 (7,000 FT-LBS) / RWM Series 76 Kingpinless Heavy Duty 7,000 lbs/caster (21,000 lb dolly)(14,000 Shipping Container Axle)</b>			<b>Dolly 3x Rating</b>
76-NYB-0630-S	T37: 76-NYB-0630-S (Nylatron)(1x6"x3")(OAH:8")(7000.lbs./caster)(12.5 lbs.) (Kingpinless.07k) (Swivel)	\$517.79	21,000
76-NYB-0830-S	T37: 76-NYB-0830-S (Nylatron)(1x8"x3")(OAH:10-1/2")(7000.lbs./caster)(16 lbs.) (Kingpinless.07k) (Swivel)	\$636.09	21,000
2-76-NYB-0630-S	T37: 2-76-NYB-0630-S (Nylatron)(2x6"x3")(OAH:8-1/16")(7000.lbs./caster)(22 lbs.) (Kingpinless.07k) (Swivel)	\$850.20	AeroWich.06
2-76-NYB-0830-S	T37: 2-76-NYB-0830-S (Nylatron)(2x8"x3")(OAH:10-1/2")(7000.lbs./caster)(29 lbs.) (Kingpinless.07k) (Swivel)	\$1,071.85	AeroWich.08
2-76-FNB-1241-S	T37: 2-76-FNB-1241-S (Pneumatic)(2x12"x4.1")(OAH:15-1/2")(1000.lbs./caster)(35 lbs.) (Kingpinless.07k) (Swivel)	\$611.98	HitchWich 3K
2-76-FNB-1448-S	T37: 2-76-FNB-1448-S (Pneumatic)(2x14"x4.8")(OAH:17-3/4")(1740.lbs./caster)(41 lbs.) (Kingpinless.07k) (Swivel)	\$799.00	HitchWich 5K
2-76-FNT-1648-S	T37: 2-76-FNT-1648-S (Pneumatic)(2x16"x4.8")(OAH:19-1/8")(2000.lbs./caster)(53 lbs.) (Kingpinless.07k) (Swivel)	\$899.00	HitchWich 6K
76-NYB-1230-S	T37: 76-NYB-1230-S (Nylatron)(1x12"x3")(OAH:15-1/2")(7000.lbs./caster)(26 lbs.) (Kingpinless.07k) (Swivel)	\$997.90	21,000
76-NYB-1030-S	T37: 76-NYB-1030-S (Nylatron)(1x10"x3")(OAH:12-1/2")(7000.lbs./caster)(21 lbs.) (Kingpinless.07k) (Swivel)	\$784.12	21,000
2-76-UIR-1230-S	T37: 2-76-UIR-1230-S (Urethane On Iron)(2x12"x3")(OAH:15-1/2")(6800.lbs./caster)(88 lbs.) (Kingpinless.07k) (Swivel)	\$1,621.10	20,400
<b>Tri60.T5 (33,000 FT-LBS)</b>		<b>T5 (T51/T52/T54)</b>	
<b>Tri60.T5.T51 (33,000 FT-LBS) / RWM Series 85 Kingpinless Heavy Duty 10,000 lbs/caster (30,000 lb dolly)(20,000 Shipping Container Axle)</b>			<b>Dolly 3x Rating</b>
2-85-DUR-1230-S-SA	T51: 2-85-DUR-1230-S-IMS (Shock Absorbing DU)(2x12"x3")(OAH:16-1/2")(6600.lbs./caster)(60 lbs.) (Kingpinless.10k) (Swivel)	\$1,768.16	ShockWich 26k
85-NYB-0630-S	T51: 85-NYB-0630-S (Nylatron)(1x6"x3")(OAH:8-1/2")(10000.lbs./caster)(18 lbs.) (Kingpinless.10k) (Swivel)	\$693.22	30,000
85-NYB-0830-S	T51: 85-NYB-0830-S (Nylatron)(1x8"x3")(OAH:10-1/2")(10000.lbs./caster)(22 lbs.) (Kingpinless.10k) (Swivel)	\$908.70	30,000
85-NYB-1030-S	T51: 85-NYB-1030-S (Nylatron)(1x10"x3")(OAH:12-1/2")(10000.lbs./caster)(26 lbs.) (Kingpinless.10k) (Swivel)	\$1,120.17	30,000
85-NYB-1230-S	T51: 85-NYB-1230-S (Nylatron)(1x12"x3")(OAH:15-1/2")(10000.lbs./caster)(38 lbs.) (Kingpinless.10k) (Swivel)	\$1,544.35	30,000
2-85-NYB-0630-S	T51: 2-85-NYB-0630-S (Nylatron)(2x6"x3")(OAH:8-1/2")(10000.lbs./caster)(23 lbs.) (Kingpinless.10k) (Swivel)	\$1,460.55	AeroWich.06
2-85-NYB-0830-S	T51: 2-85-NYB-0830-S (Nylatron)(2x8"x3")(OAH:10-1/2")(10000.lbs./caster)(29 lbs.) (Kingpinless.10k) (Swivel)	\$1,290.80	AeroWich.08
2-85-NYB-0840-S	T51: 2-85-NYB-0840-S (Nylatron)(2x8"x4")(OAH:10-1/2")(10000.lbs./caster)(36 lbs.) (Kingpinless.10k) (Swivel)	\$1,253.30	AeroWich.08
2-85-NYB-1030-S	T51: 2-85-NYB-1030-S (Nylatron)(2x10"x3")(OAH:12-1/2")(10000.lbs./caster)(46 lbs.) (Kingpinless.10k) (Swivel)	\$1,631.65	AeroWich.10
2-85-NYB-1040-S	T51: 2-85-NYB-1040-S (Nylatron)(2x10"x4")(OAH:12-1/2")(10000.lbs./caster)(76 lbs.) (Kingpinless.10k) (Swivel)	\$1,781.65	AeroWich.10
2-85-NYB-1230-S	T51: 2-85-NYB-1230-S (Nylatron)(2x12"x3")(OAH:15-1/2")(10000.lbs./caster)(71 lbs.) (Kingpinless.10k) (Swivel)	\$1,941.12	AeroWich.12
85-UIR-1250-S	T51: 85-UIR-1250-S (Urethane On Iron)(1x12"x5")(OAH:15-1/2")(6000.lbs./caster)(48 lbs.) (Kingpinless.10k) (Swivel)	\$1,503.87	18,000
2-85-UIR-1650-S	T51: 2-85-UIR-1650-S (Urethane On Iron)(2x16"x5")(OAH:18-1/2")(10000.lbs./caster)(185 lbs.) (Kingpinless.10k) (Swivel)	\$2,024.10	30,000
<b>Tri60.T5.T52 (33,000 FT-LBS) / RWM Series 95 Kingpinless Heavy Duty 20,000 lbs/caster (60,000 lb dolly)(40,000 Shipping Container Axle)</b>			<b>Dolly 3x Rating</b>
2-95-DUR-1630-S	T52: 2-95-DUR-1630-S (Durastan)(2x16"x3")(OAH:19")(16000.lbs./caster)(89 lbs.) (Kingpinless.20k) (Swivel)		MAX.DU
2-95-GTB-1030-S	T52: 2-95-GTB-1030-S (Ergo GT)(2x10"x3")(OAH:12-3/4")(6800.lbs./caster)(45 lbs.) (Kingpinless.20k) (Swivel)		MAX.GT
95-NYB-0840-S	T52: 95-NYB-1040-S (Nylatron)(1x10"x4")(OAH:12-1/2")(16500.lbs./caster)(30 lbs.) (Kingpinless.20k) (Swivel)	\$1,272.18	42,000
95-NYB-1040-S	T52: 2-95-NYB-0840-S (Nylatron)(2x8"x4")(OAH:10-3/4")(20000.lbs./caster)(63 lbs.) (Kingpinless.20k) (Swivel)	\$1,848.28	49,500

2-95-NYB-0630-S	T52: 2-95-NYB-0630-S (Nylatron)(2x6"x3")(OAH:8-3/4")(20000.lbs./caster)(26 lbs.) (Kingpinless.20k) (Swivel)	\$1,525.50	AeroWich.06
2-95-NYB-0830-S	T52: 2-95-NYB-0830-S (Nylatron)(2x8"x3")(OAH:10-3/4")(20000.lbs./caster)(55 lbs.) (Kingpinless.20k) (Swivel)	\$1,663.35	AeroWich.08
2-95-NYB-0840-S	T52: 2-95-NYB-0840-S (Nylatron)(2x8"x4")(OAH:10-3/4")(20000.lbs./caster)(63 lbs.) (Kingpinless.20k) (Swivel)	\$1,864.60	AeroWich.08
2-95-NYB-1030-S	T52: 2-95-NYB-1030-S (Nylatron)(2x10"x3")(OAH:12-3/4")(20000.lbs./caster)(68 lbs.) (Kingpinless.20k) (Swivel)	\$2,178.90	AeroWich.10
2-95-NYB-1040-S	T52: 2-95-NYB-1040-S (Nylatron)(2x10"x4")(OAH:12-3/4")(20000.lbs./caster)(94 lbs.) (Kingpinless.20k) (Swivel)	\$2,472.30	AeroWich.10
2-95-NYB-1230-S	T52: 2-95-NYB-1230-S (Nylatron)(2x12"x3")(OAH:12-3/4")(20000.lbs./caster)(97 lbs.) (Kingpinless.20k) (Swivel)	\$2,728.60	AeroWich.12
2-95-FNT-1648-S	T52: 2-95-FNT-1648-S (Pneumatic)(2x16"x4.8")(OAH:19-1/8")(2460.lbs./caster)(45 lbs.) (Kingpinless.20k) (Swivel)	\$908.70	HitchWich 7k
2-95-FNT-1857-S	T52: 2-95-FNT-1857-S (Pneumatic)(2x18"x5.7")(OAH:21-1/2")(3120.lbs./caster)(82 lbs.) (Kingpinless.20k) (Swivel)	\$1,552.20	HitchWich 9k
95-UIR-1650-S	T52: 95-UIR-1650-S (Urethane On Iron)(1x16"x5")(OAH:19")(8400.lbs./caster)(60 lbs.) (Kingpinless.20k) (Swivel)	\$2,239.95	25,200
2-95-UIR-1460-S	T52: 2-95-UIR-1460-S (Urethane On Iron)(2x14"x6")(OAH:18")(18000.lbs./caster)(178 lbs.) (Kingpinless.20k) (Swivel)	\$4,487.29	54,000
<b>Tri60.T5.T54 (33,000 FT-LBS) / RWM Series 125 Kingpinless Heavy Duty 40,000 lbs/caster (120,000 lb dolly)(80,000 Shipping Container Axle(2x)(3x))</b>			<b>Dolly 3x Rating</b>
2-125-CIR-1260-S	T54: 2-125-CIR-1260-S (Cast Iron)(2x12"x6")(OAH:15-1/2")(20000.lbs./caster)(130 lbs.) (Kingpinless.40k) (Swivel)		MAX.CI
2-125-FST-1040-S	T54: 2-125-FST-1040-S (Forged Steel)(2x10"x4")(OAH:13-1/2")(40000.lbs./caster)(100 lbs.) (Kingpinless.40k) (Swivel)		MAX.FS
2-125-NYB-0840-S	T54: 2-125-NYB-0840-S (Nylatron)(2x8"x4")(OAH:11-1/2")(28000.lbs./caster)(79 lbs.) (Kingpinless.40k) (Swivel)	\$3,554.63	AeroWich.08
2-125-NYB-1040-S	T54: 2-125-NYB-1040-S (Nylatron)(2x10"x4")(OAH:13-1/2")(33000.lbs./caster)(99 lbs.) (Kingpinless.40k) (Swivel)	\$3,754.63	AeroWich.10
2-125-NYB-1240-S	T54: 2-125-NYB-1240-S (Nylatron)(2x12"x4")(OAH:15-1/2")(33000.lbs./caster)(115 lbs.) (Kingpinless.40k) (Swivel)	\$4,730.40	AeroWich.12
2-125-FNT-2169-S	T54: 2-125-FNT-2169-S (Pneumatic)(2x21"x6.9")(OAH:24-1/4")(4840.lbs./caster)(130 lbs.) (Kingpinless.40k) (Swivel)	\$2,959.45	HitchWich 14k
2-125-FNT-2365-S	T54: 2-125-FNT-2365-S (Pneumatic)(2x23"x6.5")(OAH:26-1/4")(5550.lbs./caster)(135 lbs.) (Kingpinless.40k) (Swivel)	\$3,399.00	HitchWich 16k
2-125-FNT-2575-S	T54: 2-125-FNT-2575-S (Pneumatic)(2x25"x7.5")(OAH:28-3/4")(7260.lbs./caster)(140 lbs.) (Kingpinless.40k) (Swivel)	\$3,792.10	HitchWich 21k
2-125-FNT-2575-S-SA	T54: 2-125-FNT-2575-S-SA-OMS-LLST-FF (Shock Absorbing PN)(2x25"x7.5")(OAH:28-3/4")(5000.lbs./caster)(167 lbs.) (Kingpinless.40k) (Swivel)	\$7,832.34	ShockWich 20k
2-125-UIR-2050-S	T54: 2-125-UIR-2050-S (Urethane On Iron)(2x20"x5")(OAH:23-1/2")(18000.lbs./caster)(280 lbs.) (Kingpinless.40k) (Swivel)	\$5,964.37	MAX.UI
2-125-UIT-1240-S-SA	T54: 2-125-UIT-1240-S-OMS (Shock Absorbing UI)(2x12"x4")(OAH:21")(9600.lbs./caster)(290 lbs.) (Kingpinless.40k) (Swivel)	\$5,936.90	ShockWich 38k
2-125-UIT-1650-S-SA	T54: 2-125-UIT-1650-S-OMS (Shock Absorbing UI)(2x16"x5")(OAH:23")(13000.lbs./caster)(400 lbs.) (Kingpinless.40k) (Swivel)	\$6,710.84	ShockWich 52k
<b>Caster Options</b>			
<b>Caster Options</b>			
(-SL)	Swivel Lock (SL) (Locks Swivel Caster in one of four directions: 0-90-180-270 degrees)	\$143.32	Caster Option
(-PCWB)	Poly Cam Wheel Brake (PCWB) (Heavy Duty Applications)	\$149.76	Caster Option
<i>Swivel Locks are absolutly necessary / Brakes are not necessary but are a safety feature on ramps and prevents movement for production steps that is a added safety feature</i>			
<b>Caster Learning</b>			
<b>Caster Learning</b>			
<i>Dolly 3x Rating</i>	Dolly 3x Rating is 3 of 4 casters. Always assume one casters is not in contact with the ground. Extreme slopes assume two.		Safety
<i>(CI) Cast Iron</i>	Durable, versatile, and heat-resistant. Ideal for high temperatur ovens.		Ovens
<i>(DU) Durastan</i>	Resist degradation, deterioration, corrosion from oil, grease, commonly used acids and solvents. (Molded Plastic Hollow but Strong)		\$
<i>(FN) Pneumatics</i>	Large Load Capabilities, Excellent Shock Absorbency, Noise Reduction, Off-Road Ability (Gravel, Broken Concrete, Sand, Snow)		18% Max Capa
<i>(GT) Ergo-GT</i>	Absorb impacts without damage that would shatter other wheels and will perform under the most extreme temperatures (Solid Elastic)		\$\$
<i>(NY) Nylatron</i>	Extremely Heavy Duty, Severe Loads, Easier on floors than Steel and Iron wheels / Resilient against High Temperature, Largest Diameter 12"		\$\$\$ / Capa BM
<i>(SA) Shock Absorbing</i>	Protected Cargo, Reduce Noise, Decrease Risk of Overload, Increase Ease of Use, Reduce Risk of Damage To Floor		Custom
<i>(UI) Urethane On Iron</i>	Traditional Industrial Duty Casters , Abrasion Resistance, recommended if you need Heavy-Duty Casters Diameters greater than 12"		\$\$\$\$ / Why?
<a href="http://www.TriWich.com">www.TriWich.com</a>	<a href="mailto:Engineering@TriWich.com">Engineering@TriWich.com</a>		<b>909.582.9591</b>