

TriWich® Modular Mobility Solutions

HitchWich" Official Military Shipping Container Dolly" Off-Road-Pneumatic (87,120 lbs) On-Road- Towing (397,000-lbs)
Tri-UP Straight Up 30" to 130": Load/Unload Chassis, Flatbeds, & LiftWich / Tri-Jack 23" in 90 seconds 40k/64k
LiftWich "The Highway Dolly" - Use your Pickup truck to Jack & Tow Shipping Container and go down the Highway
Angled Wheel Dolly: 99,000 lbs AeroWich, 18,000 lbs 32" Semi-Trucks, 6,000 lbs 24" Electric-Vehicle, 2,400 lbs 18" Supercars
TriWich - Smallest Strongest Most Diverse Dolly Worldwide for EVERY caster in the world! 3"-25" up to 40 lbs./caster



TriWich: Which Wich is Which? Products and Terminology



TriWich® Modular Mobility Solutions

HitchWich™ "The Official Military Shipping Container Dolly" Off-Road-Pneumatic (87,120 lbs) On-Road Nylatron (396,000-lbs)



SpindleWich

"Rear Axle" up to 14,000 lb Shipping Containers



SwivelWich

Off-Road Pneumatics

"Swivel Axle" Front or Back Up to 240,000 lbs/axles (480,000 lb containers)

On-Road Nylatron

T3 Pneumatic (US Navy HitchWich)

T5 Nylatron (AT&T CaddyWich)



www.TriWich.com

Engineering@TriWich.com

909-582-9591

TriWich® Modular Mobility Solutions

HitchWich "The Official Military Shipping Container Dolly" Off-Road-Pneumatic (87,120 lbs) On-Road Nylatron (396,000-lbs)



Tri-Couplers HitchWich

"HitchWich" is our Tri-Coupler with a Ball Hitch Coupler and optional Flexible V-Bar

HitchWich enable anyone to move containers with a tractor, forklift, truck (ball hitch), truck (V-Bar) or Trailer Caddy (Robot)

HitchWich comes with a number of adapter options: Forklift Adapters 6x2, 8x3, 10x4, Skid Steer 11k, V-Bar "the US Army/Navy Wagon" / Tractors require a 3 point hitch specific to your tractor.



CaddyWich

Trailer Caddies and Aircraft Caddies require Front Loaded and need a "Rigid Connector"

CaddyWich is used to pivot fully loaded shipping containers in production and tight areas not accessible by larger equipment



www.TriWich.com

Engineering@TriWich.com

909-582-9591

TriWich® Modular Mobility Solutions



HitchWich "The Official Military Shipping Container Dolly" Off-Road-Pneumatic (87,120 lbs) On-Road Nylatron (396,000-lbs)

HitchWich							
The Official Military Shipping Container Dolly							
US Army, Navy, Air Force, Marines, Coast Guard, Space Force, & Department of Defense							
Enables you to move an Empty to Fully Loaded Shipping Container with a Tractor, Forklift, Truck or Aircraft Caddy on Pneumatics or Heavy-Duty Casters							
TriWich SKU	TriWich SKU Description	2024.05.04.06	Quantity	Pricing	Ext Price	Ext Wt (lbs)	DBG
Off-Road Pneumatic Solutions "The US Army/Navy Wagon" - Most Demanding Application							
HitchWich.P0 TurnKey Solutions: SpindleWich Rear Axle with SwivelWich Tri-Coupler without Casters (Zero Pneumatics) Up To 14,000 lb Containers							
HitchWich.P0 : Means the Container load is carried by a Forklift or Tractor (Tractors require a 3-Pt Hitch)(Forklift require a Forklift Adapter)							
HitchWich.P0.T30.11K	HitchWich 11,000 lb. (One T30 SwivelWich Axle With No Casters)(Rear Axle SpindleWich 5,660 lb)(Tri-Coupler Ball Hitch 21k)*						
HitchWich.P0.T30.14K	HitchWich 14,000 lb. (One T30 SwivelWich Axle With No Casters)(Rear Axle SpindleWich 7,000 lb)(Tri-Coupler Ball Hitch 21k)						
Forklift Adapters (6x2, 8x3, 10x4)(How big are your forks?)							
ForkWich.AD62	Forklift Adapter 6x2 with all Hardward (Ball Hitch 2-5/16")(Safety Chain) Standard Forklift						
ForkWich.AD83	Forklift Adapter 8x3 with all Hardward (Ball Hitch 2-5/16")(Safety Chain) "US Army"						
ForkWich.ADX4	Forklift Adapter 10x4 with all Hardward (Ball Hitch 2-5/16")(Safety Chain)"Alaska University"						
HitchWich.P2 TurnKey Solutions: SpindleWich Rear Axle with SwivelWich Tri-Coupler with Two Pneumatic "Off Road" Casters Up To 14,000 lb Containers							
Pneumatic "P2": Means the load is supported by casters and enables you to use a Pickup to pull a container. (V-Bar required for US Army/Navy Wagon)							
HitchWich.P2.T37.06K	HitchWich 6,000 lb. Two Pneumatic Casters 2x16"(Rear Axle SpindleWich 5,660 lb)(One T37 12k SwivelWich Axle)(Tri-Coupler Ball Hitch 21k)						
HitchWich.P2.T52.09K	HitchWich 9,360 lb. Two Pneumatic Casters 2x18" (Rear Axle SpindleWich 5,660 lb)(One SwivelWich T52 40k Axle)(Tri-Coupler Lunette Ring)*						
HitchWich.P2.T54.14K	HitchWich 14,000 lb. Two Pneumatic Casters 2x21"(Rear Axle SpindleWich 7,000 lb)(One T54 40k SwivelWich Axle)(Tri-Coupler Lunette Ring)						
V-Bar (enables wide turns for a pickup)							
V-Bar.60K	V-Bar with 60k Lunette Ring						
HitchWich.P4 TurnKey Solutions: Two SwivelWich Axles Four Pneumatic "Off Road" Casters Up To 21,780 lb. Containers							
Pneumatic "P4": are necessary when the containers are over 14,000 lbs which is the limit of SpindleWich (Max 4 Pneumatics 21,780 lbs)(Max 4 Nylatron 99,000 lbs)							
HitchWich.P4.T37.03K	HitchWich 3,000 lb. Four Pneumatic Casters 2x12" (Two T37 14k SwivelWich Axles)(Tri-Coupler Ball Hitch 21k)						
HitchWich.P4.T37.05K	HitchWich 5,220 lb. Four Pneumatic Casters 2x14" (Two T37 14k SwivelWich Axles)(Tri-Coupler Ball Hitch 21k)						
HitchWich.P4.T37.06K	HitchWich 6,000 lb. Four Pneumatic Casters 2x16" (Two T37 14k SwivelWich Axles)(Tri-Coupler Ball Hitch 21k)						
HitchWich.P4.T52.07K	HitchWich 7,380 lb. Four Pneumatic Casters 2x16" (Two T52 40k SwivelWich Axles)(Tri-Coupler Lunette Ring 60k)						
HitchWich.P4.T52.09K	HitchWich 9,360 lb. Four Pneumatic Casters 2x18" (Two T52 40k SwivelWich Axles)(Tri-Coupler Lunette Ring 60k)						
HitchWich.P4.T54.14K	HitchWich 14,520 lb. Four Pneumatic Casters 2x21"(Two T54 80k SwivelWich Axles)(Tri-Coupler Lunette Ring 60k)						
HitchWich.P4.T54.16K	HitchWich 16,650 lb. Four Pneumatic Casters 2x23"(Two T54 80k SwivelWich Axles)(Tri-Coupler Lunette Ring 60k)						
HitchWich.P4.T54.21K	HitchWich 21,780 lb. Four Pneumatic Casters 2x25" (Two T54 80k SwivelWich Axles)(Tri-Coupler Lunette Ring 60k)						
HitchWich.P8 TurnKey Solutions: Two SwivelWich Axles Eight Pneumatic "Off Road" Casters Up To 43,560 lb. Containers With Tri-Plug Wall Bridge							
Pneumatic "P8": are necessary if you require Pneumatics above 21,780 lbs (Max 8 Pneumatics 43,560 lbs.)(Max 8 Nylatrons 198,000 lbs.)							
HitchWich.P8.T54.29K	HitchWich 29,040 lb. Eight Pneumatic Casters 2x21"(Two T5X 160k SwivelWich Axles)(Tri-Coupler Lunette Ring 60k)						
HitchWich.P8.T54.33K	HitchWich 33,300 lb. Eight Pneumatic Casters 2x23" (Two T5X 160k SwivelWich Axles)(Tri-Coupler Lunette Ring 60k)						
HitchWich.P8.T54.43K	HitchWich 43,560 lb. Eight Pneumatic Casters 2x25" (Two T5X 160k SwivelWich Axles)(Tri-Coupler Lunette Ring 60k)						
HitchWich.PX TurnKey Solutions: Two SwivelWich Axles Twelve Pneumatic "Off Road" Casters Up To 65,340 lb. Containers With Double Corner & Tri-Plug Wall Bridge							
Pneumatic "PX": IS necessary if you require Pneumatics above 43,560 lbs (Max 12 Pneumatics 65,340 lbs.)(Max 12 Nylatron 297,000 lbs.)							
HitchWich.PX.T54.49K	HitchWich 49,950 lb. Twelve Pneumatic Casters 2x23" (Two T5X 240k SwivelWich Axles)(Tri-Coupler Lunette Ring 60k)						
HitchWich.PX.T54.65K	HitchWich 65,340 lb. Twelve Pneumatic Casters 2x25" (Two T5X 240k SwivelWich Axles)(Tri-Coupler Lunette Ring 90k)						
On-Road Nylatron Turnkey Solutions "The AT&T Production Dolly"							
HitchWich.N4 Turnkey Solution: Two SwivelWich Axles With Four Nylatron "On-Road" Casters Up to 99,000 lbs Containers							

Nylatron Four (N4) Swivel Turnkey Solutions: Enable 99,000 lbs/containers dollies

HitchWich.N4.T32.06K	HitchWich 6,000 lb. Four Nylatron Casters 1x4" (Two T32 4k SwivelWich Axles)(Tri-Coupler Ball-Hitch)
HitchWich.N4.T36.18K	HitchWich 18,000 lb. Four Nylatron Casters 1x6" (Two T36 12k SwivelWich Axles)(Tri-Coupler Lunette Ring 60k)
HitchWich.N4.T37.21K	HitchWich 21,000 lb. Four Nylatron Casters 1x6" (Two T37 14k SwivelWich Axles)(Tri-Coupler Lunette Ring 60k)
HitchWich.N4.T51.30K	HitchWich 30,000 lb. Four Nylatron Casters 1x6" (Two T3X 20k SwivelWich Axles)(Tri-Coupler Lunette Ring 60k)
HitchWich.N4.T52.60K	HitchWich 60,000 lb. Four Nylatron Casters 2x6" (Two T52 40k SwivelWich Axles)(Tri-Coupler Lunette Ring 60k)
HitchWich.N4.T54.99K	HitchWich 99,000 lb. Four Nylatron Casters 2x10" (Two T54 80k SwivelWich Axles)(Tri-Coupler Lunette Ring 90k)

HitchWich.N8 Turnkey Solution: Two SwivelWich Axles With Eight Nylatron "On-Road" Casters Up to 198,000 lbs Containers With Tri-Plug Wall Bridge

Nylatron Eight Swivel Turnkey Solutions "N8": Casters enable 198,000 lbs/containers dollies (if needed)

HitchWich.N8.T52.12K	HitchWich 120,000 lb. Eight Nylatron Casters 2x6" (Two T52.x2 160k SwivelWich Axles)(Tri-Coupler Lunette Ring 90k)
HitchWich.N8.T54.16K	HitchWich 168,000 lb. Eight Nylatron Casters 2x8" (Two T54x2 160k SwivelWich Axles)(Tri-Coupler Lunette Ring 90k)
HitchWich.N8.T54.19K	HitchWich 198,000 lb. Eight Nylatron Casters 2x10" (Two T54x2 160k SwivelWich Axles)(Tri-Coupler Lunette Ring 90k)

HitchWich.NX Turnkey Solution: Two SwivelWich Axles With Twelve Nylatron "On-Road" Casters Up to 297,000 lbs Containers With Double Corner Tri-Plug Wall Bridge

Nylatron Twelve Swivel Turnkey Solutions "NX": Casters enable 297,000 lbs/containers dollies (if needed)

HitchWich.NX.T54.25K	HitchWich 252,000 lb. Twelve Nylatron Casters 2x8" (Two T54x3 240k SwivelWich Axles)(Tri-Coupler Lunette Ring 90k)
HitchWich.NX.T54.29K	HitchWich 297,000 lb. Twelve Nylatron Casters 2x10" (Two T54x3 240k SwivelWich Axles)(Tri-Coupler Lunette Ring 90k)

Nylatron Max Diameter is 12". Larger Diameters improve ergonomics, faster speed, inclined surfaces and lower life cost.

Shock Absorbing Turnkey Solutions

ShockWich Turnkey Solutions: Two Tri-Corner SwivelWich Axles with Eight Shock Absorbing Casters Up to 104,000 lbs Containers

Shock Absorbing Heavy-Duty Caster Turnkey Solutions: Up to 104,000 lbs/containers dollies

ShockWich.D8.T36.16K	ShockWich 16,800 lb. Eight Shock Absorbing Durastan 2x8" (Two T3X 60k SwivelWich Axles)(Tri-Coupler Lunette Ring)
ShockWich.D8.T36.24K	ShockWich 24,000 lb. Eight Shock Absorbing Durastan 2x10" (Two T3X 60k SwivelWich Axles)(Tri-Coupler Lunette Ring)
ShockWich.D8.T51.55K	ShockWich 52,000 lb. Eight Shock Absorbing Durastan 2x12" (Two T5X 160k SwivelWich Axles)(Tri-Coupler Lunette Ring)
ShockWich.U8.T54.76K	ShockWich 76,800 lb. Eight Shock Absorbing Urethan on Iron 2x12" (Two T5X 160k SwivelWich Axles)(Tri-Coupler Lunette Ring)
ShockWich.U8.T54.X4K	ShockWich 104,000 lb. Eight Shock Absorbing Urethan on Iron 2x16" (Two T5X 160k SwivelWich Axles)(Tri-Coupler Lunette Ring)

Shock Absorbing Pneumatic Caster Turnkey Solutions: Up to 60,000 lbs/containers dollies

ShockWich.P8.T54.40K	ShockWich 40,000 lb. Eight Shock Absorbing Pneumatic 2x25" (Two T5X 160k SwivelWich Axles)(Tri-Coupler Lunette Ring)
ShockWich.PX.T54.60K	ShockWich 60,000 lb. Twelve Shock Absorbing Pneumatic 2x25" (Two T5X 240k SwivelWich Axles)(Tri-Coupler Lunette Ring)

Why HitchWich is "The Official Military Shipping Container Dolly"

Military Shipping Container Dolly RFQ:

1) Portable (not permanently fixed) and able to be stored in the container when not in use. **2) Portable** (not permanently fixed) and able to be stored in the container when not in use **3) Manual hydraulic jack system** **4) Capable of Manual movement** Integrated tow bar to facilitate forklift/tractor/tug movement **5) Front wheel steerable**, real wheel fixed **6) Minimum 10 metric ton lift capacity** **7) Rubber tires** Capable of both paved and unpaved compact dirt/earth transport. **8) Compatible with military aircraft** for storage container transport (C-130, C-17, C-5) **9) Similar to TriWich HitchWich**

	P4.T54.14k	Tandemloc	TriWich	Delta	Delta%
Container	20-FT only	6, 10, 20, 40 FT			
Installation	Crane	Tri-Jacks / Tri-UP			
Dolly	\$54,153	\$33,320	(\$20,833)		38%
Towbar	\$4,123	\$1,528	(\$2,595)		63%
Shipping	\$3,688	\$1,844	(\$1,844)		50%
Total	\$61,963	\$36,692	(\$25,271)		41%

We offer over 36 HitchWich Solutions from 3,000 lbs to 396,000 lb Containers

We are 42% less than the Predecessor that has only 2 Solutions for 20ft containers only and requires a crane to install.

No Surprise HitchWich is "The Official Military Shipping Container Dolly!"

Seeing is Believing Videos

- <https://youtu.be/cqeZWDgluOg>
- <https://youtu.be/38d26rt5xEg>
- <https://youtu.be/fDEY4tnu-i8>
- <https://youtu.be/f3q6TI9ZRo0>
- <https://youtu.be/WiauKd56lJE>

- HitchWich Switch: Pickup (V-Bar) to a Forklift (ForkWich Adapter)
- HitchWich: Bounding a 40ft Shipping container with a forklift
- HitchWich: US Navy Wagon V-Bar for Pickup Truck
- HitchWich: AT&T 60,000 lb. Shipping Container Production Caddy
- HitchWich: Moving a Shipping Container with a Forklifts

<https://youtu.be/wBAJg1ZY0mY>

HitchWich: Swapping Pneumatic to HD Casters (Grass to Concrete)

www.TriWich.com

Engineering@TriWich.com

909.582.9591

TriWich® Modular Mobility Solutions

Tri-UP Straight Up 30" to 130": Load/Unload Chassis, Flatbeds, & LiftWich / Tri-Jack 23" in 90 seconds 40k/64k



Tri-Jack / Tri-UP



Tri-Jack

- * Tri-Jack hydraulic 23" Long Ram Jack installs in seconds (left)
- * Lift time, 23" in 90 sec with 5T(10k)/corner (40k container)
- * Lift time, 23" in 180 sec with 8T(16k)/corner(64k container)

We improved Tri-Jack again and were going to patent it,

However, we realized we could Straight UP 130" with Tri-UP

TriWich® Modular Mobility Solutions

Tri-UP Straight Up 30"-70" / 90"-130": Load/Unload Chassis, Flatbeds, & LiftWich Smoothly and Horizontally



Tri-UP



Tri-UP "The Mobile Shipping Container Depot"

Off-load Shipping Container From Chassis, Flatbeds or LiftWich Anywhere With a Pickup Truck

TriWich® Modular Mobility Solutions

Tri-UP Straight Up 30" to 130": Load/Unload Chassis, Flatbeds, & LiftWich / Tri-Jack 23" in 90 seconds 40k/64k



		Tri-UP "The Mobile Depot"					
TriWich SKU	TriWich SKU Description	2024.01.23.05	Quantity	Pricing	Ext Price	Ext Wt (lbs)	Note
Tri-Jack							
Tri-Jack 23" Modular Container Jack							
Tri-Jack.2310	Tri-Jack "The Modular Shipping Container Jack" (Range 0" to 23" in 90 sec)(5-tons)						
Tri-Jack.2316	Tri-Jack "The Modular Shipping Container Jack" (Range 0" to 23" in 180 sec)(8-tons)						
Tri-UP							
Tri-UP 30" by Capacity Range							
Tri-Up.03k.30IN	Tri-UP Automated Lift 3,000 lbs/Corner 30" (0.7m) / (Empty Container 12k)			Available Now			Tri-Up 30"
Tri-Up.09k.30IN	Tri-UP Automated Lift 9,000 lbs/Corner 30" (0.7m) / (50% Container 36k)			Based On Customer Demand			Tri-Up 30"
Tri-Up.13k.30IN	Tri-UP Automated Lift 13,000 lbs/Corner 30" (0.7m) / (75% Container 52k)			Based On Customer Demand			Tri-Up 30"
Tri-Up.17k.30IN	Tri-UP Automated Lift 17,000 lbs/Corner 30" (0.7m) / (100% Container 68k)			Based On Customer Demand			Tri-Up 30"
Tri-UP Base 3k/leg by Height Options							
Tri-Up.03k.30IN	Tri-UP One Automated Lift 3,000 lbs/Corner 30" (0.7m) / (Empty Container 12k)			Available Now			Tri-Up 3k
Tri-Up.03k.40IN	Tri-UP One Automated Lift 3,000 lbs/Corner 40" (1.0m) / (Empty Container 12k)			Available Now			Tri-Up 3k
Tri-Up.03k.50IN	Tri-UP One Automated Lift 3,000 lbs/Corner 50" (1.2m) / (Empty Container 12k)			Available Now			Tri-Up 3k
Tri-Up.03k.60IN	Tri-UP One Automated Lift 3,000 lbs/Corner 60" (1.5m) / (Empty Container 12k)			Available Now			Tri-Up 3k
Tri-Up.03k.70IN	Tri-UP One Automated Lift 3,000 lbs/Corner 70" (1.7m) / (Empty Container 12k)			Available Now			Tri-Up 3k
Tri-Up.03k.90IN	Tri-UP One Automated Lift 3,000 lbs/Corner 90" (2.2m) / (Empty Container 12k)			Based On Customer Demand			Tri-Up 3k
Tri-Up.03k.X1IN	Tri-UP One Automated Lift 3,000 lbs/Corner 110" (2.7m) / (Empty Container 12k)			Based On Customer Demand			Tri-Up 3k
Tri-Up.03k.X3IN	Tri-UP One Automated Lift 3,000 lbs/Corner 130" (3.3m) / (Empty Container 12k)			Based On Customer Demand			Tri-Up 3k
www.TriWich.com		Engineering@TriWich.com					909.582.9591

TriWich® Modular Mobility Solutions

LiftWich "The Highway Dolly" - Use your Pickup truck to Jack & Tow Shipping Container and go down the Highway



LiftWich

The Gooseneck Jack and Tow Container System

Use your Pickup truck to Jack & Tow Shipping Container and Drive Down the Highway (Enabling ANY Mobile Business concept you can imagine)



TriWich® Modular Mobility Solutions

LiftWich™ "The.HighWay.Dolly": Gooseneck.V-Frame / Tri-Plug / Dynamic Corners / Saddles / BaseWich / BoXLeSS / WHeeLLeSS



LiftWich							
"The Highway Dolly"							
Eliminate 10,000 lbs of metal (No Semi-Truck, No Chassis, No Flatbed) >> Save \$200k CAPEX, lower fuel & maintenance cost Moving a 40ft container under 10,000 lbs. / NO Commercial Driver License (CDL) required / NO Stopping at the Weigh Station (saving 3 hrs/day)							
TriWich SKU	TriWich SKU Description	2024.03.19.14	Quantity	Pricing	Ext Price	Ext Wt (lbs)	Note
Two Years of In-Field Testing Complete				Automation for Single User to Operate April 2025			
Official USMCA Launch May 2024				Global Launch APAC 2025 / EMEA 2026			
MUST HAVE V-Frame							
V-Frame System							
LiftWich.V-Frame LiftWich V-Frame Full System (Gooseneck V-Frame, Dynamic Corners, Tri-Coupler, HeimJoint Struts) <i>V-Frame System consists of the Gooseneck V-Frame, Upper Casting Corner Tri-Plugs, Lower Casting Corner Dynamic Corners, Sntatch Block Tri-Coupler, & Heim Joint Struts One V-Frame can operate any Shipping Container size 6, 10, 20, 30, 40, 45, 53 foot. One V-Frame One registration for every trailer size.</i>							
MUST HAVE Tri-Trailers							
Tri-Trailers System (Container Saddles with BaseWich)							
Tri-Trailer.1056	Single Axle Electric Brake Trailer 5,660 lbs. (Up to 20ft Shipping Containers)						
Tri-Trailer.1070	Single Axle Electric Brake Trailer 7,000 lbs. (Up to 20ft Shipping Containers)						
Tri-Trailer.2113	Double Axle Trailer with Electric Brakes (Up to 40ft Shipping Container)(11k/17k)						
Tri-Trailer.2140	Double Axle Trailer with Electric Brakes (Up to 40ft Shipping Container)(14k/21k)						
Tri-Trailer.3168	Triple Axle Trailer with Electric Brakes (Up to 40ft Shipping Container)(16k/24k)						
Tri-Trailer.3210	Triple Axle Trailer with Electric Brakes (Up to 53ft Shipping Container)(21k/30k)						
<i>Tri-Trailers come with Modular Axles 1-2-3 , 40ft EZ-Connect Cable, Junction Box, Electric Brakes and Casting Corner Taillights Multiple Trailers can be used with one V-Frame System. Run multiple jobs at one time and keep your team on the go.</i>							
MUST HAVE BoXLeSS							
Boxless							
LiftWich.BoXLeSS LiftWich BoXLeSS Travelling Without a Shipping Container (BoXLess, TowHitch-Mast) <i>BoXLeSS enables you to drive the axles (Container Saddles) down the highway</i>							
Optional WHeeLLeSS							
WHeeLLeSS							
LiftWich.WHeeLLeSS WHeeLLeSS - Highway Travel WITHOUT Trailer & V-Frame Automated Installation <i>WHeeLLeSS enables you to drive the V-Frame without the Container Saddles(axles) down the highway WHeeLLeSS is a Tee Frame that the V-Bar rests on and enables automated installation of the V-Frame</i>							
Optional AutoSaddles							
AutoSaddles							
LiftWich.AutoTrailer LiftWich Automated Trailer Axle Option with Remote Control (2 or 3 axle only) <i>AutoSaddles enables remote control of your axles (Container Saddles), this is optional, but if you work alone, this is a feature recommended by our Trailblazers in field testing</i>							
Optional Tri-UP							
Tri-UP							
Tri-Up.1403	Tri-UP One Automated Lift 40" (1.0m) / 3,000 lbs/Corner (3k)(Empty Container 12k)						
Tri-Up.1409	Tri-UP One Automated Lift 40" (1.0m) / 9,000 lbs/Corner (9k)(50% Container 36k) <i>Tri-UP enables you lift a shipping container 70" (1.7m) if you like. For LiftWich, it enables a horizontal lift like an elevator. We could lift a glass container and drive it down the highway</i>						
Questions & Answers							
DOT / DMV / VIN	DOT is required for towing above 15,000 lbs. LiftWich is a DMV Registered trailer with an assigned VIN. Towing an empty 40ft container is under 10,000 lbs.						
25,000 lb Equivalent	LiftWich eliminates 10,000 lbs of metal (NO Chassis / NO Semi-Truck) LiftWich @ 15,000 lbs. would legally be equivalent to a Chassis/Tiltbed at 25,000 lbs.						
No Semi-Truck	LiftWich eliminates the need for a Semi-Truck to move containers. \$200,000 investment savings & Cost of Ownership 70% of a Semi-Truck						
No Chassis/Flatbed	LiftWich eliminates the need for a chassis or flatbed. which mean spending fuel fo trucker Deadhead is reduced 90%						

No CDL (Save \$\$\$)
 No Scales (Save time)
 Multi-Trailer
 Zero Down Financing

Moving a 40ft container is under 10,000 lbs., which means it is like moving a boat trailer or 5th Wheeler, so a Commercial Driver License (CDL) is not required!
 If you are pulling a container with a a 250, no need to stop at the Weigh Stations and spend 3 hours/day not having to waiting in line to weigh your trailer!
 One V-Frame can be used to manage multiple Rear Trailer systems /jobs (Reducing the average "trailer" under 20k)
 Business owners over 3 years can qualify for LiftWich with Zero Down Financing (we hire you for shipping and handling)

Cost of Ownership
70% less
than a Semi-Truck

TriWich
Recommends a 250
Why Strength of Tow Hitch
 Investment
 Monthly Truck Payment
 Monthly Insurance
 Monthly Licensing Cost
 Monthly Certified Driver License
 Monthly Maintenance Cost
 Monthly Gas Cost

Horse Power
Total Monthly Cost of Ownership
Cost of Ownership %
Truck Base Model
6 years at 0% interest

	550	450	350	250	150
	\$6,078	\$3,736	\$2,935	\$2,034	\$1,506
	299%	184%	144%	LiftWich	LiftWich
	\$200,000	\$100,000	\$75,000	\$50,000	\$35,000
	\$2,778	\$1,389	\$1,042	\$694	\$486
	\$300	\$250	\$200	\$150	\$100
	\$100	\$80	\$60	\$40	\$20
	\$100	\$100	\$100	\$0	\$0
	\$300	\$250	\$200	\$150	\$100
	\$2,500	\$1,667	\$1,333	\$1,000	\$800
	4,000	4,000	4,000	4,000	4,000
	8	12	15	20	25
	500	333	267	200	160
	\$5.00	\$5.00	\$5.00	\$5.00	\$5.00

Preliminary, but you get the point....
 Assumptions are intentionally conservative
 Real values would probably result in a factor 4
Meaning 400% difference or 25% the cost of a Semi-Truck

Miles Per month
 Miles Per Gallon
 Gallons per Month
 Cost per Gallon

Cost Of Ownership 70% lower is the reason why the LiftWich will impact the global Moving and Transport Industry

The Making of LiftWich

LiftWich will be a worldwide phenomenon. We are already asked to manufacture in APAC in Australia

2022-04-15	https://youtu.be/yLnDny4VLxE	LiftWich S1 One Axle , Manual Winch - 35mph - Gooseneck Jack & Tow Shipping Container Solution	
2022-06-18	https://youtu.be/--M8ThgrfzQ	LiftWich S2 Electric Winch and Struts - 65mph - Gooseneck Jack & Tow Shipping Container Solution	
2022-08-15	https://youtu.be/LC3KquXZ4ds	LiftWich S3 Double Axle Container Saddles - 70mph - Gooseneck Jack & Tow Shipping Container Solution	
2022-09-17	https://youtu.be/NmRc1mwE3Jw	LiftWich S4 Brakes, Lights, VIN, License Plate / Gooseneck Jack & Tow Container Solution	
2022-10-30	https://youtu.be/812mpP0BfUM	LiftWich S5 Powder Coated, Wrapped & Ready For #SEMA2022	
2022-11-18	https://youtu.be/sZYmw6H8XiY	LiftWich S7 40Ft Shipping Container 70 mph - Eliminating a Semi-Truck and Chassis	
2023-03-25	https://youtu.be/giufazdFE_l	LiftWich V2 "The Highway Doll" / Max Strength Gooseneck V-Frame BoXLeSS Driving Test / RAW	
2023-04-06	https://youtu.be/7u9kn2aDLjw	LiftWich V2 "The Highway Dolly" / CAD Simulation / Eliminating 10k lbs of metals / Patent Approved	CAD SIM
2023-05-18	https://youtu.be/agGDf0UyOoo	LiftWich V2 "The Highway Dolly" / U-Turn in a Cul-De-Sac - Imagine a U-Turn with a 40ft container	
2023-05-29	https://youtu.be/Fw0rZT6gyc	LiftWich V2 "The Highway Dolly" / 20ft Tiny Home / Mike Eicher @ Homeland Fireworks	
2023-06-05	https://youtu.be/BEyJveif15A	LiftWich V2 "The Highway Dolly" / 40ft Container 12,160 lbs / Mike Eicher @ Homeland Fireworks	Nr1 Video
2023-12-21	https://youtu.be/RvVSPDpV5lg	LiftWich S8 - BoXLeSS - Traveling Without a Shipping Container (Without a Box)	
TBD	Coming April 2024	LiftWich V3 "The Highway Dolly" / Automation (WHeeLLeSS)(AustoSaddles)(Tri-UP)	

Milestones & Next Steps

Milestones

LiftWich V1 Prototype Q4 2022 - October 2022 Prototype V1 competed (See YouTube S1-S6 how we developed LiftWich Step By Step)(Sold Immediately)
 LiftWich V2 Max Strength Q1 2023 - March 2023 40% stronger than V1: Double V, Dynamic Corners, Tri-Plug, BoXLeSS CS/VT (Customers requested Pre-Orders)(Sold immediately)
 LiftWich CAD Simulation Q2 2023 - April 2023 (@ NPSA in Vegas) 1 minute CAD installation simulation - 5 Steps Showing how LiftWich is installed.
 LiftWich & Tri-UP Q4 2023 - December 2023 Successful Tri-UP Prototype / Patent Pending / Enables horizontal lift of container
 LiftWich V3 Automation Q1 2024 - Automation Enabling ONE Operator (V-Frame Installation / Trailer Axle / Tri-UP)
 LiftWich & Tri-UP USMCA Q2 2024 - US-Mexico-Canda (USMCA) Roll Out target National Portable Shipping Associate (NPSA) May 5-7, 2024, Washington DC
 LiftWich & Tri-UP APAC Q2 2025 -Launching Manufacturing / Initial Distributor rights in Asia-Pacific (APAC) (Kick-Off Meeting Q3.23 / Formalizing Q3.24)
 LiftWich & Tri-UP EMEA Q2 2026 -Launching Manufacturing / Initial Distributor rights in Europe-Middle East & Africa (EMEA) (pending completion of APAC agreement)
 TriWich International Q2 2027 - Roll out International Country Level Distributor Agreements (Exclusive ONE Distributor per Country)(Aligned with Initial Manufacturing/Distributor)

www.TriWich.com

Engineering@TriWich.com

909.582.9591

TriWich® Modular Mobility Solutions

Angled Wheel Dolly: 99,000 lbs AeroWich, 18,000 lbs 32" Semi-Trucks, 6,000 lbs 24" Electric-Vehicle, 2,400 lbs 18" Supercars

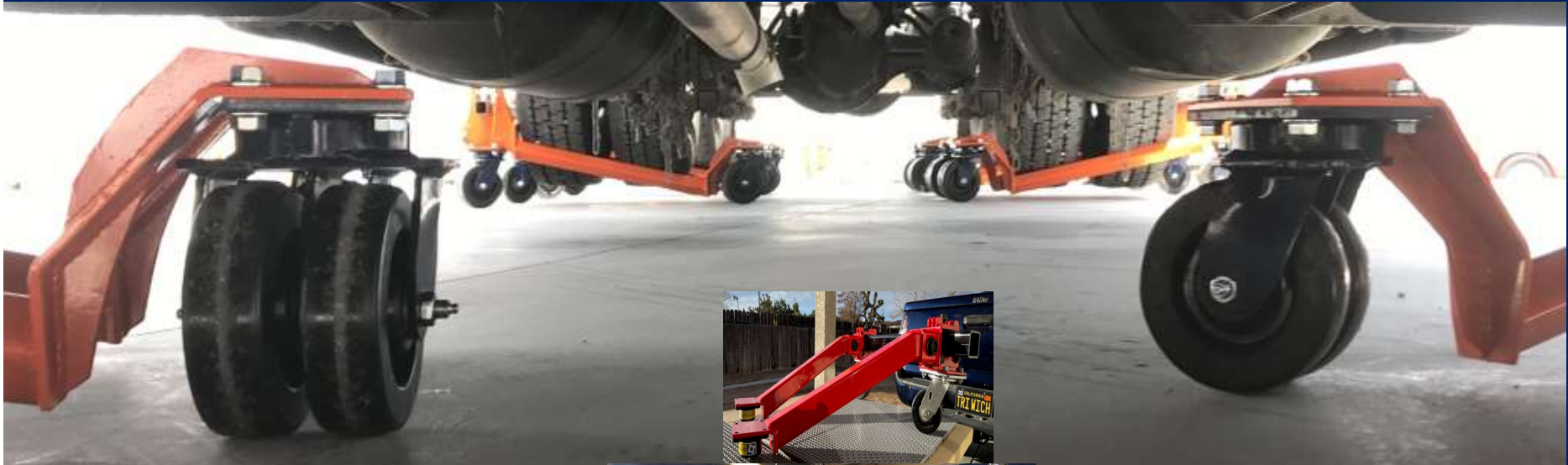


Modular Wheel Dollies

Same TriWich Tri60 pick up a Supercar (with 2" clearance) a Semi-Truck and 737 airplane

Light Duty 18" 2,500 lbs/tire (Ultra Low 1.75" Caster) / Medium Duty 28" 6,000 lbs/tire (RV/EV) / Heavy Duty 28" 18,000 lbs/tire (Semi-Truck)

Tarmac Aircraft Wheel Dollies 99,000 lbs/tire (Four TriWich Tri60 system with Airplane Jacking Point Jacks)



www.TriWich.com

Engineering@TriWich.com

909-582-9591

TriWich® Modular Mobility Solutions

Angled Wheel Dolly: 99,000 lbs AeroWich, 18,000 lbs 32" Semi-Trucks, 6,000 lbs 24" Electric-Vehicle, 2,400 lbs 18" Supercars



TriWich

Modular Mobility Solutions

The Smallest Strongest Most Diverse Dolly Worldwide

TriWich is the only Product in the World that can pickup EVERY Casters in the World !

TriWich SKU	TriWich SKU Description	2024.03.14.19	Quantity	Pricing	Ext Price	Ext Wt (lbs)	Note
Angled Wheel Dolly (AWD) "The 32" Dualy Wheel Dolly" up to 18,000 lbs/tire							
AWD T1.16" Single Wheel 2,500 lbs/tire : Ultra Low 2" Profile Supercar / Luxury Performance / Low Riders							
Angled Wheel Dolly 18" up to 2,400 lbs/tire (4,800 axle) Ultra Low 2" Clearance for Supercar, Performance Luxury & Artistic Low Riders							
Angled.18.2400	Angled Wheel Dolly (AWD) T1.18" 2,400 lbs. (4,800 Axle)(Ultra Low 2" Profile "Supercar" Dolly)						
<i>Angled.18 Rear Caster is an OmniTrack 1" ball casters. This can only operate on smooth concrete without cracks. That is as low as we can go.</i>							
AWD T2 24" Standard Dually Wheels (2x11") - Electric Vehicle (EV) / Recreation Vehicles (RV)							
Angled Wheel Dolly 24" up to 6,000 lbs/tire (12,000 axle) - Electric Vehicle/ RV's							
Angled.24.2800	Angled Wheel Dolly (AWD) T2 24" 2,800 lbs. (Set of 1)(2,800 lbs/tire)(5,600 lbs/Axle)(Inside Durastan)(EV/RV Dolly)						
Angled.24.3600	Angled Wheel Dolly (AWD) T2 24" 3,600 lbs. (Set of 1)(3,600 lbs/tire)(7,200 lbs/Axle)(Inside Ergo GT)(EV/RV Dolly)						
Angled.24.6000	Angled Wheel Dolly (AWD) T2 24" 6,000 lbs. (Set of 1)(6,000 lbs/tire)(12,000 lbs/Axle)(Outside Nylatron)(EV/RV Dolly)						
<i>Angled.24 Rear Caster is 4" while the Front Casters are 6" used for Standard Single (any size) & Dually (2x11") wheels under 6,000 lbs/tire</i>							
AWD T3 32" Semi-Truck Dually Wheels (2x15") - Semi-Truck / Firetruck / Cement Trucks / Buses							
Angled Wheel Dolly 32" up to 18,000 lbs/tire (36,000 Axle) - Semi-Trucks, Buses, Fire Trucks, Cement Trucks							
Angled.32.6500	Angled Wheel Dolly (AWD) T3 32" 6,500 lbs. (Set of 1)(6,500 lbs/tire)(13,000 lbs/Axle)(Inside Durastan)(Semi-Truck Dolly)						
Angled.32.7600	Angled Wheel Dolly (AWD) T3 32" 7,600 lbs. (Set of 1)(7,600 lbs/tire)(15,200 lbs/Axle)(Inside Durastan)(Semi-Truck Dolly)						
Angled.32.9600	Angled Wheel Dolly (AWD) T3 32" 9,600 lbs. (Set of 1)(9,600 lbs/tire)(19,200 lbs/Axle)(Inside Ergo GT)(Semi-Truck Dolly)						
Angled.32.X800	Angled Wheel Dolly (AWD) T3 32" 18,000 lbs. (Set of 1)(18,000 lbs/tire)(36,000 lbs/Axle)(Outside Nylatron)(Semi-Truck Dolly)						
<i>Angled.WD.32 Rear Caster is 6" while the Front Casters are 8" used for Semi-Truck Single (any size) & Dually (2x15") wheels under 18,000 lbs/tire</i>							
AeroWich: "The Airport Tarmac Dolly" Up to 99,000 lbs/tire							
Used for Damaged Landing Gear or Flat Tires ON or OFF the Runway							
Why Double Wheels? Airport Tarmac runways are designed for water run-off, or half the surface area is voided. To maintain Max capacity double wheeled casters are necessary.							
Why Wider Wheel? Wider Wheel cover more of the voided Tarmac surface and reduce vibration, which means longer life and lower "Cost of Ownership"							
AeroWich "The Airport Tarmac Dolly" with Double 6" Wheels						60,000 lbs/tire (150,000 lb Aircraft)	
AeroWich.13k.0602	AeroWich "The Airport Tarmac Dolly" 2x6"x2" 13,200 lbs/tire (33,000 lb. Aircraft)					13,200	
AeroWich.21k.0602	AeroWich "The Airport Tarmac Dolly" 2x6"x3" 21,000 lbs/tire (52,000 lb. Aircraft)					21,000	
AeroWich.30k.0603	AeroWich "The Airport Tarmac Dolly" 2x6"x3" 30,000 lbs/tire (75,000 lb. Aircraft)					30,000	
AeroWich.60k.0603	AeroWich "The Airport Tarmac Dolly" 2x6"x3" 60,000 lbs/tire (150,000 lb. Aircraft)					60,000	
AeroWich "The Airport Tarmac Dolly" with Double 8" Wheels						84,000 lbs/tire (210,000 lb Aircraft)	
AeroWich.18k.0802	AeroWich "The Airport Tarmac Dolly" 2x8"x2" 18,000 lbs/tire (45,000 lb. Aircraft)					18,000	
AeroWich.21k.0803	AeroWich "The Airport Tarmac Dolly" 2x8"x3" 21,000 lbs/tire (52,000 lb. Aircraft)					21,000	
AeroWich.30k.1003	AeroWich "The Airport Tarmac Dolly" 2x8"x3" 30,000 lbs/tire (75,000 lb. Aircraft)					30,000	
AeroWich.30k.1004	AeroWich "The Airport Tarmac Dolly" 2x8"x4" 30,000 lbs/tire (75,000 lb. Aircraft)					30,000	
AeroWich.60k.0803	AeroWich "The Airport Tarmac Dolly" 2x8"x3" 60,000 lbs/tire (150,000 lb. Aircraft)					60,000	
AeroWich.60k.0804	AeroWich "The Airport Tarmac Dolly" 2x8"x4" 60,000 lbs/tire (150,000 lb. Aircraft)					60,000	
AeroWich.84k.0804	AeroWich "The Airport Tarmac Dolly" 2x8"x4" 84,000 lbs/tire (210,000 lb. Aircraft)					84,000	
AeroWich "The Airport Tarmac Dolly" with Double 10" Wheels						99,000 lbs/tire (247,000 lb Aircraft)	
AeroWich.30k.1003	AeroWich "The Airport Tarmac Dolly" 2x10"x3" 30,000 lbs/tire (75,000 lb. Aircraft)					30,000	

AeroWich.30k.1004	AeroWich "The Airport Tarmac Dolly" 2x10"x4" 30,000 lbs/tire (75,000 lb. Aircraft)	30,000
AeroWich.60k.1003	AeroWich "The Airport Tarmac Dolly" 2x10"x3" 60,000 lbs/tire (150,000 lb. Aircraft)	60,000
AeroWich.60k.1004	AeroWich "The Airport Tarmac Dolly" 2x10"x4" 60,000 lbs/tire (150,000 lb. Aircraft)	60,000
AeroWich.99k.1004	AeroWich "The Airport Tarmac Dolly" 2x10"x4" 99,000 lbs/tire (247,000 lb. Aircraft)	99,000

AeroWich "The Airport Tarmac Dolly" with Double 12" Wheels

AeroWich.30k.1203	AeroWich "The Airport Tarmac Dolly" 2x12"x3" 30,000 lbs/tire (75,000 lb. Aircraft)	30,000
AeroWich.60k.1203	AeroWich "The Airport Tarmac Dolly" 2x12"x3" 60,000 lbs/tire (150,000 lb. Aircraft)	60,000
AeroWich.99k.1204	AeroWich "The Airport Tarmac Dolly" 2x12"x4" 99,000 lbs/tire (247,000 lb. Aircraft)	99,000

99,000 lbs/tire (247,000 lb Aircraft)

DBG Cliftnotes: You want the most optimal "Cost Of Ownership" solution. Go as BIG and WIDE as your budget will allow you go. Every concession cost you 20% per year

Casters
Off-Road / On-Road / Inside /Outside / Shock Absorbing / (100% USA Made)
 The Wheel Dolly Market

Casters

Wheel Dolly Market - Strongest Wheel Dollies in the world

REAL APPLICATIONS

Toyota (Saline, MI) New R&D production line for a 9,000 lbs SUV
Peterbilt division TranPower (USA Semi-Truck Manufacture based on Escondido, CA) **E-Transmissions** Heavy-Duty electronic transmissions.
Kenworth Semi-Truck (Renton WA) Production Line moving 15,000 lbs Drive Axles without Transmissions
BLT Ready Mixed Concrete (Yuma, AZ) Maintenance of the largest rotating Ready Mix Semi-Truck
MidWest Bus Corp (Owosso, MI) City Buss Maintenance
Smithsonian (Washington DC) Museum **45,000 lb Fire Truck** used during the 2011 9-11 attack (**Sponsored by Pentagon Heroes**)
Iveco (EU Italy) **First Dually 15" 18,000 lbs/tire Wheels** (2x15"+2"gap) for European OEM Semi-Truck and Bus Manufacturer
 And numerous private individuals with heavy boats, 5th wheelers, and dually wheeled vehicles

COMPETITIVE

TriWich Dolly 3x Rating is based on 3 casters, while our competitors' ratings are based on 4 casters and every wheel has the same load.

MARKETING

Wheel Dolly Capacity Comparison:

		Caster(1T)	Tire(3T)	Engine(6T)	Rear 40%	Vehicle
GoJack.6313	Ratchet Dolly 13" 1537 lbs/tire (limited design and your leg strength)(3" casters)	550	1,650	3,300	2,200	5,500
Angled.WD.18.2400	Angled Wheel Dolly 18" 2,400 lbs/tire (1"/4" Casters) 2" Profile Supercars	800	2,400	4,800	3,200	8,000
Angled.WD.24.6000	Angled Wheel Dolly 24" 6,000 lbs/tire (4"/5" Casters) (2x11") Dually RV/EV	2,000	6,000	12,000	8,000	20,000
Angled.WD.32.X800	Angled Wheel Dolly 32" 18,000 lbs/tire (6"/8" Casters) Semi-Truck Fire Trucks	6,000	18,000	36,000	24,000	60,000
The Iron Tire	Iron Tire Aircraft Flat Tire Dolly (20,000 lbs. Capacity) (Prepare for Sticker Shock)	6,000	18,000	36,000	24,000	60,000
AeroWich.T54.1204	AeroWich Aircraft Tarmac Wheel Dollies 99,000 lbs/tire: Gulstream, 737, 747	33,000	99,000	Aircraft	247,500	

Wheel Dolly Dually (Length) Comparison:

Dually wheel definition is: Tire Width x2 + 2 inch gap. How big is your dually	16"	20"	24"	28"	32"
	7	9	11	13	15

TOOLS

Wrench or an impact drill/gun for nut and bolt assembly. Floor Jack for lifting from front or Two Bottle Jacks from the sides

LIFTING

Lifting methods depend on customer preference and can be accomplished with a floor jack, bottle jack or other methods customized to specific application.

ASSESSORY

One Floor Jack Adapter is necessary per system if you are planning to use a standard floor jack

TRI60 UNIVERSAL DOLLY

TriWich Tri60 enabled the highest capacity wheel dollies in the world (99,000 lbs/tire)

Automotive Wheel Dollies comes with two TriWich Tri60s, while the Aircraft Tarmac Dollies come with four TriWich Tri60s.

With Four TriWich Tri60s and four Tri-Bars, you can create a universal dolly to pick up anything in your house, garage, shop or factory.

With Tri-Lugs you can pick up Shipping Containers and with AnyWich you can pick up machinery

TriWich offers machinery connector and standard bars for different application, for example 28" is our Door way bar

Wheel Dolly Market - Strongest Wheel Dollies in the world

Videos

https://youtu.be/eau6a3brVHI	Angled Wheel Dollies Up to 99,000 lbs/tire (And How Does It Work?)
https://youtu.be/9qGUj11nc6E	Angled Wheel Dollies: Supercars, EVs, RVs, Semi-Trucks & 747s (Up to 99,000 lbs/tire) (TriWich Origins)
https://youtu.be/HlOINo99cqc	Angled Wheel Dolly MWD.T1.16 2,900 lbs/tire (Ultra Low 2" Profile) Supercars & Luxury Performance
https://youtu.be/X3d7_9dwRzs	Angled Wheel Dolly MWD.T3.28 / Prototype / Installation / Feedback to Engineering
Coming Soon	Angled Wheel Dolly 32" 18,000 lbs/tire (6"/8" Casters) new design for Iveco in Europe (28" was not long enough)

Engineering@TriWich.com

Pricing Valid 30 day until inflation is under control, Taxes and Shipping not included

USA +1909.582.9591

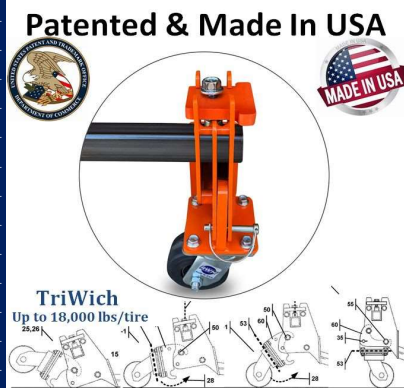
TriWich® Modular Mobility Solutions

TriWich - Smallest Strongest Most Diverse Dolly Worldwide for EVERY caster in the world! 3"-25" up to 40 lbs./caster



TriWich: Which Wich is Which? Products and Terminology

TriWich truly is the "Universal Dolly" (Casters from 1" to 25" up to 40,000 lbs/caster)(Max system 480,000 lb containers)



Casters

TriWich is the only product in the world that can use every caster in the world
Casters (100% USA Made)(1" to 25")(0 to 40,000 lbs/casster)(any material)



Nylatron (NY)	Ergo GT (GT)	Durastan (DU)	Cast Iron (CI)	Urethan on Iron (UI)	Machined Steel (MS)	Shock Absorbing (SA)	Pneumatic (PN)
Off-Road - Pneumatics - Gravel, Dirt, Sand, Snow, Lips				Inside - Durastan (DU) & Ergo GT (GT)			
On-Road - Nyaltron - Concrete, Asphalt, Tarmac Towing				Outside - Urethan on Iron (UI), Nylatron(NY), Ultra Thick Urethan (UT)			Oven - Cast Iron (CI)

Casters are split by caster plate size maximum capacity 2,000, 6,000, 7,000, 10,000, 20,000, 40,000 (T22, T36, T37, T40, T42, T51, T52, T54) as TriWich is limited by the caster plate

www.TriWich.com

Engineering@TriWich.com

909-582-9591

TriWich® Modular Mobility Solutions

Tri60/Casters: Off-Road-Pneumatic 25" (7,260 lbs) On-Road-Towing Nylatron 10" (33,000-lbs)



TriWich Modular Mobility Solutions

The Smallest Strongest Most Diverse Dolly Worldwide

TriWich is the only Product in the World that can pickup EVERY Caster in the World

TriWich SKU	TriWich SKU Description	2024.03.18.09	Quantity	Pricing	Capa/Line
Tri60.T2 (1,667 FT-LBS)		TriWich Casters			1.5" Cube (5 x 1/4") (250)
Tri60.T2.T21 (1,667 FT-LBS) / Omnitrack Ball Transfer Casters (Ultra Low 2" Profile Angled Wheel Dolly)					Dolly 3x Rating
OmniTrack.9230	T11: OmniTrack.9230 (OmniTrack)(1x1"x1") (OAH:1-3/4") (850.lbs./caster)(1.5 lbs.) (OmniTrack) (Ball)			\$91.14	2,550
Tri60.T2.T22 (1,667 FT-LBS) / RWM Series 46 Kingpin 1,200 lbs/caster (3,600 Dolly)(7,200 Automotive Axle)					Dolly 3x Rating
46-CIR-0420-S	T22: 46-CIR-0420-S (Cast Iron)(1x4"x2") (OAH:5-5/8") (800.lbs./caster)(6.5 lbs.) (Kingpin.1200) (Swivel)			\$36.45	2,400
46-CIR-0520-S	T22: 46-CIR-0520-S (Cast Iron)(1x5"x2") (OAH:6-1/2") (1000.lbs./caster)(7.8 lbs.) (Kingpin.1200) (Swivel)			\$47.45	3,000
46-CIR-0620-S	T22: 46-CIR-0620-S (Cast Iron)(1x6"x2") (OAH:7-1/2") (1200.lbs./caster)(9.1 lbs.) (Kingpin.1200) (Swivel)			\$57.70	3,600
46-CIR-0820-S	T22: 46-CIR-0820-S (Cast Iron)(1x8"x2") (OAH:9-1/2") (1200.lbs./caster)(13.3 lbs.) (Kingpin.1200) (Swivel)			\$75.59	3,600
46-DUR-3220-S	T22: 46-DUR-3220-S (Durastan)(1x3-1/4"x1-1/2") (OAH:5-1/4") (400.lbs./caster)(6.7 lbs.) (Kingpin.1200) (Swivel)			\$55.32	1,200
46-DUR-0420-S	T22: 46-DUR-0420-S (Durastan)(1x4"x2") (OAH:5-5/8") (800.lbs./caster)(5.2 lbs.) (Kingpin.1200) (Swivel)			\$37.88	Angled.18
46-DUR-0520-S	T22: 46-DUR-0520-S (Durastan)(1x5"x2") (OAH:6-1/2") (1000.lbs./caster)(5.4 lbs.) (Kingpin.1200) (Swivel)			\$58.30	3,000
46-DUR-0620-S	T22: 46-DUR-0620-S (Durastan)(1x6"x2") (OAH:7-1/2") (1200.lbs./caster)(6.3 lbs.) (Kingpin.1200) (Swivel)			\$58.04	Angled.24
46-DUR-0820-S	T22: 46-DUR-0820-S (Durastan)(1x8"x2") (OAH:9-1/2") (1200.lbs./caster)(7.7 lbs.) (Kingpin.1200) (Swivel)			\$66.04	3,600
Tri60.T2.T22 (1,667 FT-LBS) / RWM Series 48 Maintenance Free "Freedom" 1,500 lbs/caster (4,500 dolly)(9,000 lb Automotive Axle)					Dolly 3x Rating
48-DUR-0420-S	T22: 48-DUR-0420-S (Durastan)(1x4"x2") (OAH:5-5/8") (800.lbs./caster)(8 lbs.) (Freedom.1500) (Swivel)			\$90.25	2,400
48-DUR-0520-S	T22: 48-DUR-0520-S (Durastan)(1x5"x2") (OAH:6-1/2") (1000.lbs./caster)(9 lbs.) (Freedom.1500) (Swivel)			\$89.54	3,000
48-DUR-0620-S	T22: 48-DUR-0620-S (Durastan)(1x6"x2") (OAH:7-1/2") (1200.lbs./caster)(10 lbs.) (Freedom.1500) (Swivel)			\$93.04	3,600
48-DUR-0820-S	T22: 48-DUR-0820-S (Durastan)(1x8"x2") (OAH:9-1/2") (1400.lbs./caster)(11 lbs.) (Freedom.1500) (Swivel)			\$101.04	4,200
48-GTB-0420-S	T22: 48-GTB-0420-S (Ergo GT)(1x4"x2") (OAH:5-5/8") (1050.lbs./caster)(7 lbs.) (Freedom.1500) (Swivel)			\$66.99	3,150
48-GTB-0520-S	T22: 48-GTB-0520-S (Ergo GT)(1x5"x2") (OAH:6-1/2") (1200.lbs./caster)(8 lbs.) (Freedom.1500) (Swivel)			\$162.97	3,600
48-GTB-0620-S	T22: 48-GTB-0620-S (Ergo GT)(1x6"x2") (OAH:7-1/2") (1500.lbs./caster)(10 lbs.) (Freedom.1500) (Swivel)			\$168.46	Angled.24
Tri60.T2.T22 (1,667 FT-LBS) / RWM Series 65 Kingpinless "RWM Patent" 2,000 lbs/caster (6,000 dolly)(12,000 lb Automotive Axle)					Dolly 3x Rating
2-65-FNB-0828-S	T22: 2-65-FNB-0828-S (Pneumatic)(2x8"x2.8") (OAH:11") (600.lbs./caster)(20 lbs.) (Kingpinless.02k) (Swivel)			\$405.66	HitchWich 1K
2-65-FNB-1041-S	T22: 2-65-FNB-1041-S (Pneumatic)(2x10"x4.1") (OAH:13") (960.lbs./caster)(22 lbs.) (Kingpinless.02k) (Swivel)			\$519.22	HitchWich 2K
65-GTB-0820-S	T22: 65-GTB-0820-S (Ergo GT)(1x8"x2") (OAH:10-1/8") (1800.lbs./caster)(11 lbs.) (Kingpinless.02k) (Swivel)			\$213.30	5,400
65-NYB-0420-S	T22: 65-NYB-0420-S (Nylatron)(1x4"x2") (OAH:5-5/8") (2000.lbs./caster)(8.5 lbs.) (Kingpinless.02k) (Swivel)			\$198.00	6,000
65-NYB-0520-S	T22: 65-NYB-0520-S (Nylatron)(1x5"x2") (OAH:6-1/2") (2000.lbs./caster)(9.5 lbs.) (Kingpinless.02k) (Swivel)			\$274.30	6,000
65-NYB-0620-S	T22: 65-NYB-0620-S (Nylatron)(1x6"x2") (OAH:7-3/4") (2000.lbs./caster)(11 lbs.) (Kingpinless.02k) (Swivel)			\$323.80	Angled.24
65-NYB-0820-S	T22: 65-NYB-0820-S (Nylatron)(1x8"x2") (OAH:10-1/8") (2000.lbs./caster)(12 lbs.) (Kingpinless.02k) (Swivel)			\$413.80	6,000
65-UIR-0820-S	T22: 65-UIR-0820-S (Urethane On Iron)(1x8"x2") (OAH:10-1/8") (1500.lbs./caster)(13 lbs.) (Kingpinless.02k) (Swivel)			\$573.45	4,500
Tri60.T3 (7,000 FT-LBS)		T3 (T36/T37)			2.0" Cube (5 x 3/8") (375)
Tri60.T3.T36 (7,000 FT-LBS) / RWM Series 75 Kingpinless Heavy Duty 6,000 lbs/caster (18,000 lb dolly)(36,000 Automotive Axle)(12,000 Shipping Container Axle)					Dolly 3x Rating
75-DUR-0630-S	T36: 75-DUR-0630-S (Durastan)(1x6"x3") (OAH:7-1/2") (2000.lbs./caster)(12.5 lbs.) (Kingpinless.06k) (Swivel)			\$173.48	6,000
75-DUR-0830-S	T36: 75-DUR-0830-S (Durastan)(1x8"x3") (OAH:10-1/8") (2500.lbs./caster)(16.5 lbs.) (Kingpinless.06k) (Swivel)			\$178.36	Angled.32
75-DUR-1030-S	T36: 75-DUR-1030-S (Durastan)(1x10"x3") (OAH:11-1/2") (2900.lbs./caster)(20 lbs.) (Kingpinless.06k) (Swivel)			\$200.27	8,700

75-DUR-1230-S	T36: 75-DUR-1230-S (Durastan)(1x12"x3")(OAH:13-1/2")(3500.lbs./caster)(22.5 lbs.) (Kingpinless.06k) (Swivel)	\$239.53	10,500
2-75-DUR-0620-S	T36: 2-75-DUR-0620-S (Durastan)(2x6"x2")(OAH:8")(2400.lbs./caster)(12.5 lbs.) (Kingpinless.06k) (Swivel)	\$245.40	7,200
2-75-DUB-0820-S	T36: 2-75-DUB-0820-S (Durastan)(2x8"x2")(OAH:10-1/8")(2800.lbs./caster)(15 lbs.) (Kingpinless.06k) (Swivel)	\$376.70	Angled.32
2-75-DUR-0825-S-SA	T36: 2-75-DUR-0825-S-VMS (Shock Absorbing DU)(2x8"x2-1/2")(OAH:11")(2100.lbs./caster)(27 lbs.) (Kingpinless.06k) (Swivel)	\$1,130.10	ShockWich 08k
2-75-DUR-1025-S-SA	T36: 2-75-DUR-1025-S-VMS (Shock Absorbing DU)(2x10"x2-1/2")(OAH:13")(3000.lbs./caster)(30 lbs.) (Kingpinless.06k) (Swivel)	\$1,614.43	ShockWich 12k
75-GTB-0625-S	T36: 75-GTB-0625-S (Ergo GT)(1x6"x2-1/2")(OAH:7-1/2")(2300.lbs./caster)(11.5 lbs.) (Kingpinless.06k) (Swivel)	\$277.82	6,900
75-GTB-0825-S	T36: 75-GTB-0825-S (Ergo GT)(1x8"x2-1/2")(OAH:10-1/8")(2400.lbs./caster)(15 lbs.) (Kingpinless.06k) (Swivel)	\$409.37	Angled.32
75-GTB-1030-S	T36: 75-GTB-1030-S (Ergo GT)(1x10"x3")(OAH:11-1/2")(3400.lbs./caster)(20 lbs.) (Kingpinless.06k) (Swivel)	\$512.10	10,200
2-75-GTB-0520-S	T36: 2-75-GTB-0520-S (Ergo GT)(2x5"x2")(OAH:7-1/2")(2400.lbs./caster)(11.5 lbs.) (Kingpinless.06k) (Swivel)	\$376.70	7,200
2-75-GTB-0620-S	T36: 2-75-GTB-0620-S (Ergo GT)(2x6"x2")(OAH:8")(3000.lbs./caster)(12.5 lbs.) (Kingpinless.06k) (Swivel)	\$344.60	9,000
2-75-GTB-0820-S	T36: 2-75-GTB-0820-S (Ergo GT)(2x8"x2")(OAH:10-1/8")(3600.lbs./caster)(15 lbs.) (Kingpinless.06k) (Swivel)	\$556.44	Angled.32
75-NYB-0630-S	T36: 75-NYB-0630-S (Nylatron)(1x6"x3")(OAH:7-1/2")(6000.lbs./caster)(12.5 lbs.) (Kingpinless.06k) (Swivel)	\$443.82	18,000
75-NYB-0830-S	T36: 75-NYB-0830-S (Nylatron)(1x8"x3")(OAH:10-1/8")(6000.lbs./caster)(16 lbs.) (Kingpinless.06k) (Swivel)	\$545.22	Angled.32
75-NYB-1030-S	T36: 75-NYB-1030-S (Nylatron)(1x10"x3")(OAH:11-1/2")(6000.lbs./caster)(21 lbs.) (Kingpinless.06k) (Swivel)	\$672.10	18,000
2-75-NYB-0520-S	T36: 2-75-NYB-0520-S (Nylatron)(2x5"x2")(OAH:7-1/2")(4000.lbs./caster)(12 lbs.) (Kingpinless.06k) (Swivel)	\$613.64	AeroWich.05
2-75-NYB-0620-S	T36: 2-75-NYB-0620-S (Nylatron)(2x6"x2")(OAH:8")(4400.lbs./caster)(13.5 lbs.) (Kingpinless.06k) (Swivel)	\$680.52	AeroWich.06
2-75-NYB-0820-S	T36: 2-75-NYB-0820-S (Nylatron)(2x8"x2")(OAH:10-1/8")(6000.lbs./caster)(16 lbs.) (Kingpinless.06k) (Swivel)	\$839.47	AeroWich.08
75-UIB-1030-S-INF	T36: 75-UIB-1030-S-INF (Urethane On Iron)(1x10"x3")(OAH:11-1/2")(5000.lbs./caster)(23 lbs.) (Kingpinless.06k) (Swivel)	\$948.35	15,000
Tri60.T3.T37 (7,000 FT-LBS) / RWM Series 76 Kingpinless Heavy Duty 7,000 lbs/caster (21,000 lb dolly)(14,000 Shipping Container Axle)			Dolly 3x Rating
76-NYB-0630-S	T37: 76-NYB-0630-S (Nylatron)(1x6"x3")(OAH:8")(7000.lbs./caster)(12.5 lbs.) (Kingpinless.07k) (Swivel)	\$517.79	21,000
76-NYB-0830-S	T37: 76-NYB-0830-S (Nylatron)(1x8"x3")(OAH:10-1/2")(7000.lbs./caster)(16 lbs.) (Kingpinless.07k) (Swivel)	\$636.09	21,000
2-76-NYB-0630-S	T37: 2-76-NYB-0630-S (Nylatron)(2x6"x3")(OAH:8-1/16")(7000.lbs./caster)(22 lbs.) (Kingpinless.07k) (Swivel)	\$850.20	AeroWich.06
2-76-NYB-0830-S	T37: 2-76-NYB-0830-S (Nylatron)(2x8"x3")(OAH:10-1/2")(7000.lbs./caster)(29 lbs.) (Kingpinless.07k) (Swivel)	\$1,071.85	AeroWich.08
2-76-FNB-1241-S	T37: 2-76-FNB-1241-S (Pneumatic)(2x12"x4.1")(OAH:15-1/2")(1000.lbs./caster)(35 lbs.) (Kingpinless.07k) (Swivel)	\$611.98	HitchWich 3K
2-76-FNB-1448-S	T37: 2-76-FNB-1448-S (Pneumatic)(2x14"x4.8")(OAH:17-3/4")(1740.lbs./caster)(41 lbs.) (Kingpinless.07k) (Swivel)	\$799.00	HitchWich 5K
2-76-FNT-1648-S	T37: 2-76-FNT-1648-S (Pneumatic)(2x16"x4.8")(OAH:19-1/8")(2000.lbs./caster)(53 lbs.) (Kingpinless.07k) (Swivel)	\$899.00	HitchWich 6K
76-NYB-1230-S	T37: 76-NYB-1230-S (Nylatron)(1x12"x3")(OAH:15-1/2")(7000.lbs./caster)(26 lbs.) (Kingpinless.07k) (Swivel)	\$997.90	21,000
76-NYB-1030-S	T37: 76-NYB-1030-S (Nylatron)(1x10"x3")(OAH:12-1/2")(7000.lbs./caster)(21 lbs.) (Kingpinless.07k) (Swivel)	\$784.12	21,000
2-76-UIR-1230-S	T37: 2-76-UIR-1230-S (Urethane On Iron)(2x12"x3")(OAH:15-1/2")(6800.lbs./caster)(88 lbs.) (Kingpinless.07k) (Swivel)	\$1,621.10	20,400
Tri60.T5 (33,000 FT-LBS)		T5 (T51/T52/T54)	
Tri60.T5.T51 (33,000 FT-LBS) / RWM Series 85 Kingpinless Heavy Duty 10,000 lbs/caster (30,000 lb dolly)(20,000 Shipping Container Axle)			Dolly 3x Rating
2-85-DUR-1230-S-SA	T51: 2-85-DUR-1230-S-IMS (Shock Absorbing DU)(2x12"x3")(OAH:16-1/2")(6600.lbs./caster)(60 lbs.) (Kingpinless.10k) (Swivel)	\$1,768.16	ShockWich 26k
85-NYB-0630-S	T51: 85-NYB-0630-S (Nylatron)(1x6"x3")(OAH:8-1/2")(10000.lbs./caster)(18 lbs.) (Kingpinless.10k) (Swivel)	\$693.22	30,000
85-NYB-0830-S	T51: 85-NYB-0830-S (Nylatron)(1x8"x3")(OAH:10-1/2")(10000.lbs./caster)(22 lbs.) (Kingpinless.10k) (Swivel)	\$908.70	30,000
85-NYB-1030-S	T51: 85-NYB-1030-S (Nylatron)(1x10"x3")(OAH:12-1/2")(10000.lbs./caster)(26 lbs.) (Kingpinless.10k) (Swivel)	\$1,120.17	30,000
85-NYB-1230-S	T51: 85-NYB-1230-S (Nylatron)(1x12"x3")(OAH:15-1/2")(10000.lbs./caster)(38 lbs.) (Kingpinless.10k) (Swivel)	\$1,544.35	30,000
2-85-NYB-0630-S	T51: 2-85-NYB-0630-S (Nylatron)(2x6"x3")(OAH:8-1/2")(10000.lbs./caster)(23 lbs.) (Kingpinless.10k) (Swivel)	\$1,460.55	AeroWich.06
2-85-NYB-0830-S	T51: 2-85-NYB-0830-S (Nylatron)(2x8"x3")(OAH:10-1/2")(10000.lbs./caster)(29 lbs.) (Kingpinless.10k) (Swivel)	\$1,290.80	AeroWich.08
2-85-NYB-0840-S	T51: 2-85-NYB-0840-S (Nylatron)(2x8"x4")(OAH:10-1/2")(10000.lbs./caster)(36 lbs.) (Kingpinless.10k) (Swivel)	\$1,253.30	AeroWich.08
2-85-NYB-1030-S	T51: 2-85-NYB-1030-S (Nylatron)(2x10"x3")(OAH:12-1/2")(10000.lbs./caster)(46 lbs.) (Kingpinless.10k) (Swivel)	\$1,631.65	AeroWich.10
2-85-NYB-1040-S	T51: 2-85-NYB-1040-S (Nylatron)(2x10"x4")(OAH:12-1/2")(10000.lbs./caster)(76 lbs.) (Kingpinless.10k) (Swivel)	\$1,781.65	AeroWich.10
2-85-NYB-1230-S	T51: 2-85-NYB-1230-S (Nylatron)(2x12"x3")(OAH:15-1/2")(10000.lbs./caster)(71 lbs.) (Kingpinless.10k) (Swivel)	\$1,941.12	AeroWich.12
85-UIR-1250-S	T51: 85-UIR-1250-S (Urethane On Iron)(1x12"x5")(OAH:15-1/2")(6000.lbs./caster)(48 lbs.) (Kingpinless.10k) (Swivel)	\$1,503.87	18,000
2-85-UIR-1650-S	T51: 2-85-UIR-1650-S (Urethane On Iron)(2x16"x5")(OAH:18-1/2")(10000.lbs./caster)(185 lbs.) (Kingpinless.10k) (Swivel)	\$2,024.10	30,000
Tri60.T5.T52 (33,000 FT-LBS) / RWM Series 95 Kingpinless Heavy Duty 20,000 lbs/caster (60,000 lb dolly)(40,000 Shipping Container Axle)			Dolly 3x Rating
2-95-DUR-1630-S	T52: 2-95-DUR-1630-S (Durastan)(2x16"x3")(OAH:19")(16000.lbs./caster)(89 lbs.) (Kingpinless.20k) (Swivel)		MAX.DU
2-95-GTB-1030-S	T52: 2-95-GTB-1030-S (Ergo GT)(2x10"x3")(OAH:12-3/4")(6800.lbs./caster)(45 lbs.) (Kingpinless.20k) (Swivel)		MAX.GT
95-NYB-0840-S	T52: 95-NYB-1040-S (Nylatron)(1x10"x4")(OAH:12-1/2")(16500.lbs./caster)(30 lbs.) (Kingpinless.20k) (Swivel)	\$1,272.18	42,000
95-NYB-1040-S	T52: 2-95-NYB-0840-S (Nylatron)(2x8"x4")(OAH:10-3/4")(20000.lbs./caster)(63 lbs.) (Kingpinless.20k) (Swivel)	\$1,848.28	49,500

2-95-NYB-0630-S	T52: 2-95-NYB-0630-S (Nylatron)(2x6"x3")(OAH:8-3/4")(20000.lbs./caster)(26 lbs.) (Kingpinless.20k) (Swivel)	\$1,525.50	AeroWich.06
2-95-NYB-0830-S	T52: 2-95-NYB-0830-S (Nylatron)(2x8"x3")(OAH:10-3/4")(20000.lbs./caster)(55 lbs.) (Kingpinless.20k) (Swivel)	\$1,663.35	AeroWich.08
2-95-NYB-0840-S	T52: 2-95-NYB-0840-S (Nylatron)(2x8"x4")(OAH:10-3/4")(20000.lbs./caster)(63 lbs.) (Kingpinless.20k) (Swivel)	\$1,864.60	AeroWich.08
2-95-NYB-1030-S	T52: 2-95-NYB-1030-S (Nylatron)(2x10"x3")(OAH:12-3/4")(20000.lbs./caster)(68 lbs.) (Kingpinless.20k) (Swivel)	\$2,178.90	AeroWich.10
2-95-NYB-1040-S	T52: 2-95-NYB-1040-S (Nylatron)(2x10"x4")(OAH:12-3/4")(20000.lbs./caster)(94 lbs.) (Kingpinless.20k) (Swivel)	\$2,472.30	AeroWich.10
2-95-NYB-1230-S	T52: 2-95-NYB-1230-S (Nylatron)(2x12"x3")(OAH:12-3/4")(20000.lbs./caster)(97 lbs.) (Kingpinless.20k) (Swivel)	\$2,728.60	AeroWich.12
2-95-FNT-1648-S	T52: 2-95-FNT-1648-S (Pneumatic)(2x16"x4.8")(OAH:19-1/8")(2460.lbs./caster)(45 lbs.) (Kingpinless.20k) (Swivel)	\$908.70	HitchWich 7k
2-95-FNT-1857-S	T52: 2-95-FNT-1857-S (Pneumatic)(2x18"x5.7")(OAH:21-1/2")(3120.lbs./caster)(82 lbs.) (Kingpinless.20k) (Swivel)	\$1,552.20	HitchWich 9k
95-UIR-1650-S	T52: 95-UIR-1650-S (Urethane On Iron)(1x16"x5")(OAH:19")(8400.lbs./caster)(60 lbs.) (Kingpinless.20k) (Swivel)	\$2,239.95	25,200
2-95-UIR-1460-S	T52: 2-95-UIR-1460-S (Urethane On Iron)(2x14"x6")(OAH:18")(18000.lbs./caster)(178 lbs.) (Kingpinless.20k) (Swivel)	\$4,487.29	54,000
Tri60.T5.T54 (33,000 FT-LBS) / RWM Series 125 Kingpinless Heavy Duty 40,000 lbs/caster (120,000 lb dolly)(80,000 Shipping Container Axle(2x)(3x))			Dolly 3x Rating
2-125-CIR-1260-S	T54: 2-125-CIR-1260-S (Cast Iron)(2x12"x6")(OAH:15-1/2")(20000.lbs./caster)(130 lbs.) (Kingpinless.40k) (Swivel)		MAX.CI
2-125-FST-1040-S	T54: 2-125-FST-1040-S (Forged Steel)(2x10"x4")(OAH:13-1/2")(40000.lbs./caster)(100 lbs.) (Kingpinless.40k) (Swivel)		MAX.FS
2-125-NYB-0840-S	T54: 2-125-NYB-0840-S (Nylatron)(2x8"x4")(OAH:11-1/2")(28000.lbs./caster)(79 lbs.) (Kingpinless.40k) (Swivel)	\$3,554.63	AeroWich.08
2-125-NYB-1040-S	T54: 2-125-NYB-1040-S (Nylatron)(2x10"x4")(OAH:13-1/2")(33000.lbs./caster)(99 lbs.) (Kingpinless.40k) (Swivel)	\$3,754.63	AeroWich.10
2-125-NYB-1240-S	T54: 2-125-NYB-1240-S (Nylatron)(2x12"x4")(OAH:15-1/2")(33000.lbs./caster)(115 lbs.) (Kingpinless.40k) (Swivel)	\$4,730.40	AeroWich.12
2-125-FNT-2169-S	T54: 2-125-FNT-2169-S (Pneumatic)(2x21"x6.9")(OAH:24-1/4")(4840.lbs./caster)(130 lbs.) (Kingpinless.40k) (Swivel)	\$2,959.45	HitchWich 14k
2-125-FNT-2365-S	T54: 2-125-FNT-2365-S (Pneumatic)(2x23"x6.5")(OAH:26-1/4")(5550.lbs./caster)(135 lbs.) (Kingpinless.40k) (Swivel)	\$3,399.00	HitchWich 16k
2-125-FNT-2575-S	T54: 2-125-FNT-2575-S (Pneumatic)(2x25"x7.5")(OAH:28-3/4")(7260.lbs./caster)(140 lbs.) (Kingpinless.40k) (Swivel)	\$3,792.10	HitchWich 21k
2-125-FNT-2575-S-SA	T54: 2-125-FNT-2575-S-SA-OMS-LLST-FF (Shock Absorbing PN)(2x25"x7.5")(OAH:28-3/4")(5000.lbs./caster)(167 lbs.) (Kingpinless.40k) (Swivel)	\$7,832.34	ShockWich 20k
2-125-UIR-2050-S	T54: 2-125-UIR-2050-S (Urethane On Iron)(2x20"x5")(OAH:23-1/2")(18000.lbs./caster)(280 lbs.) (Kingpinless.40k) (Swivel)	\$5,964.37	MAX.UI
2-125-UIT-1240-S-SA	T54: 2-125-UIT-1240-S-OMS (Shock Absorbing UI)(2x12"x4")(OAH:21")(9600.lbs./caster)(290 lbs.) (Kingpinless.40k) (Swivel)	\$5,936.90	ShockWich 38k
2-125-UIT-1650-S-SA	T54: 2-125-UIT-1650-S-OMS (Shock Absorbing UI)(2x16"x5")(OAH:23")(13000.lbs./caster)(400 lbs.) (Kingpinless.40k) (Swivel)	\$6,710.84	ShockWich 52k
Caster Options			
Caster Options			
(-SL)	Swivel Lock (SL) (Locks Swivel Caster in one of four directions: 0-90-180-270 degrees)	\$143.32	Caster Option
(-PCWB)	Poly Cam Wheel Brake (PCWB) (Heavy Duty Applications)	\$149.76	Caster Option
<i>Swivel Locks are absolutly necessary / Brakes are not necessary but are a safety feature on ramps and prevents movement for production steps that is a added safety feature</i>			
Caster Learning			
Caster Learning			
<i>Dolly 3x Rating</i>	Dolly 3x Rating is 3 of 4 casters. Always assume one casters is not in contact with the ground. Extreme slopes assume two.		Safety
<i>(CI) Cast Iron</i>	Durable, versatile, and heat-resistant. Ideal for high temperatur ovens.		Ovens
<i>(DU) Durastan</i>	Resist degradation, deterioration, corrosion from oil, grease, commonly used acids and solvents. (Molded Plastic Hollow but Strong)		\$
<i>(FN) Pneumatics</i>	Large Load Capabilities, Excellent Shock Absorbency, Noise Reduction, Off-Road Ability (Gravel, Broken Concrete, Sand, Snow)		18% Max Capa
<i>(GT) Ergo-GT</i>	Absorb impacts without damage that would shatter other wheels and will perform under the most extreme temperatures (Solid Elastic)		\$\$
<i>(NY) Nylatron</i>	Extremely Heavy Duty, Severe Loads, Easier on floors than Steel and Iron wheels / Resilient against High Temperature, Largest Diameter 12"		\$\$\$ / Capa BM
<i>(SA) Shock Absorbing</i>	Protected Cargo, Reduce Noise, Decrease Risk of Overload, Increase Ease of Use, Reduce Risk of Damage To Floor		Custom
<i>(UI) Urethane On Iron</i>	Traditional Industrial Duty Casters , Abrasion Resistance, recommended if you need Heavy-Duty Casters Diameters greater than 12"		\$\$\$\$ / Why?
www.TriWich.com	Engineering@TriWich.com		909.582.9591